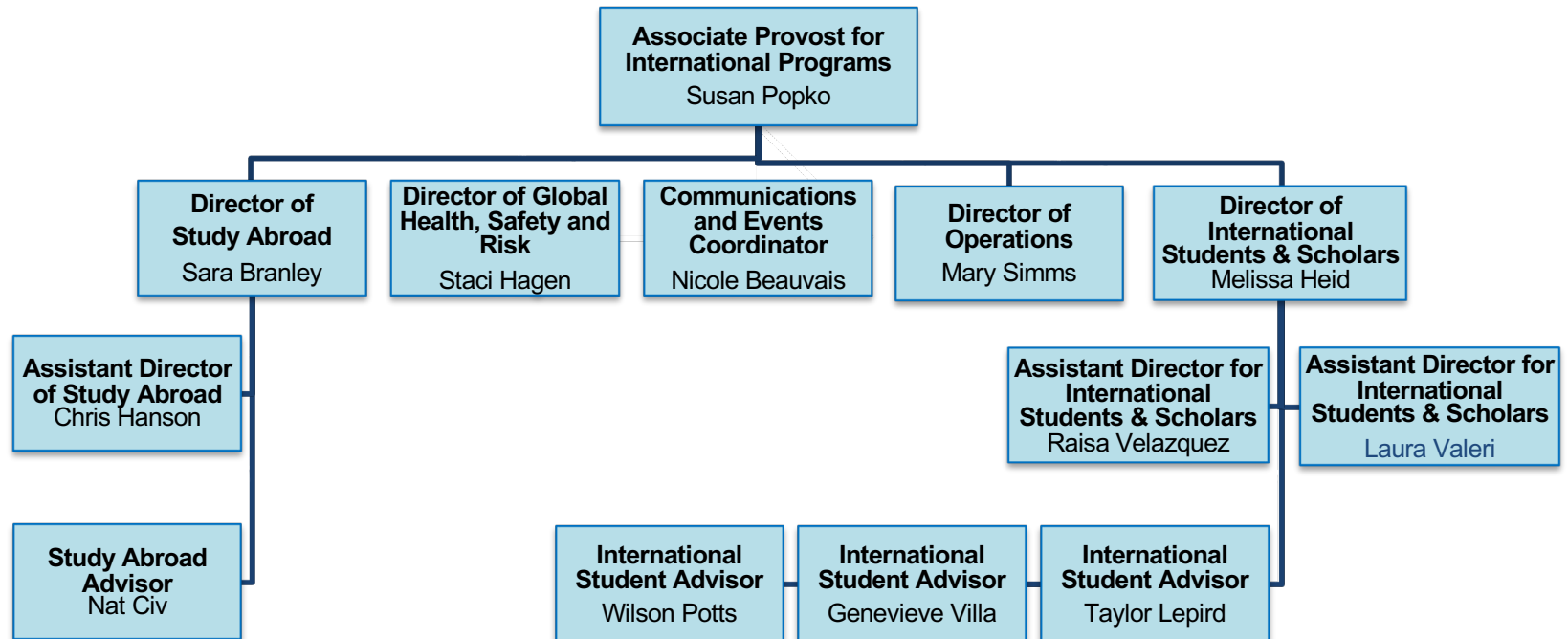


Santa Clara University Global Engagement



Additional Roles:

- Associate Director of International Programs, Paul Soukup, SJ
- Academic Freedom Working Group Leader, Heather Clydesdale

Committees:

- Travel Policy Advisory Committee (TPAC)
- Crisis Abroad Response Team (CART)
- International Enrollment Advisory Committee (IEAC)