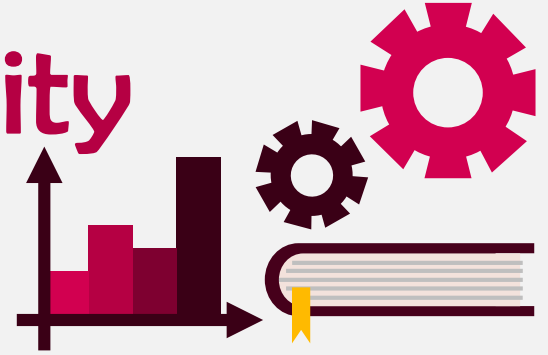




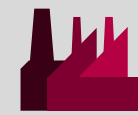
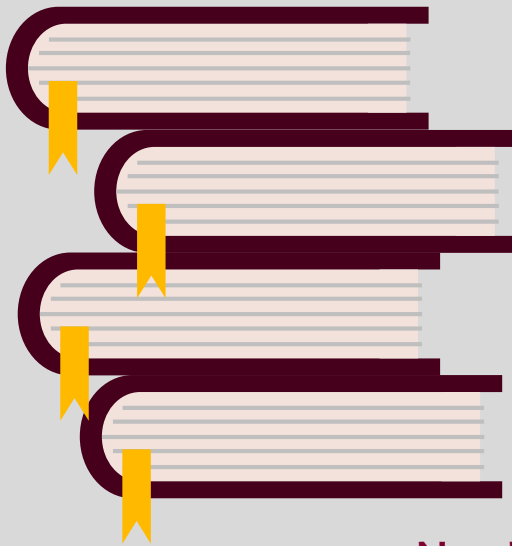
# Santa Clara University

## Class of 2010



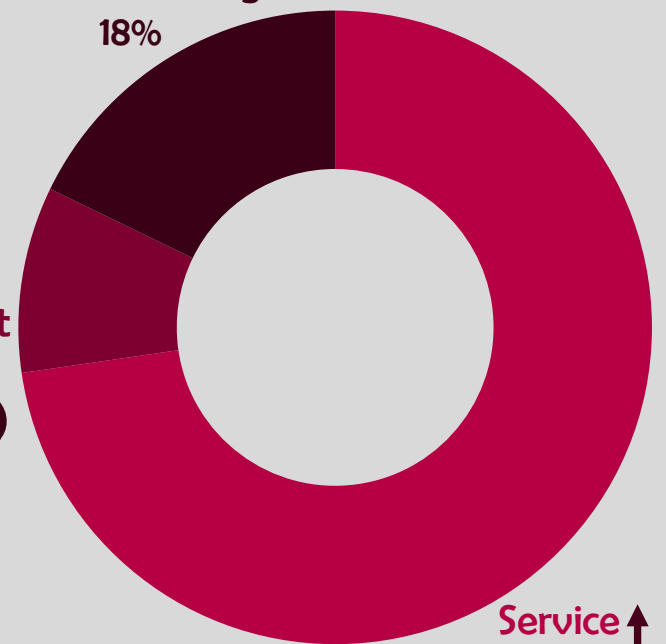
### Workforce Statistics

### Sectors of Employment<sup>1</sup>



Manufacturing  
18%

Non-Profit  
9%



Service  
73%



Note: Percentages may not add to 100 due to rounding

### Graduates Rate



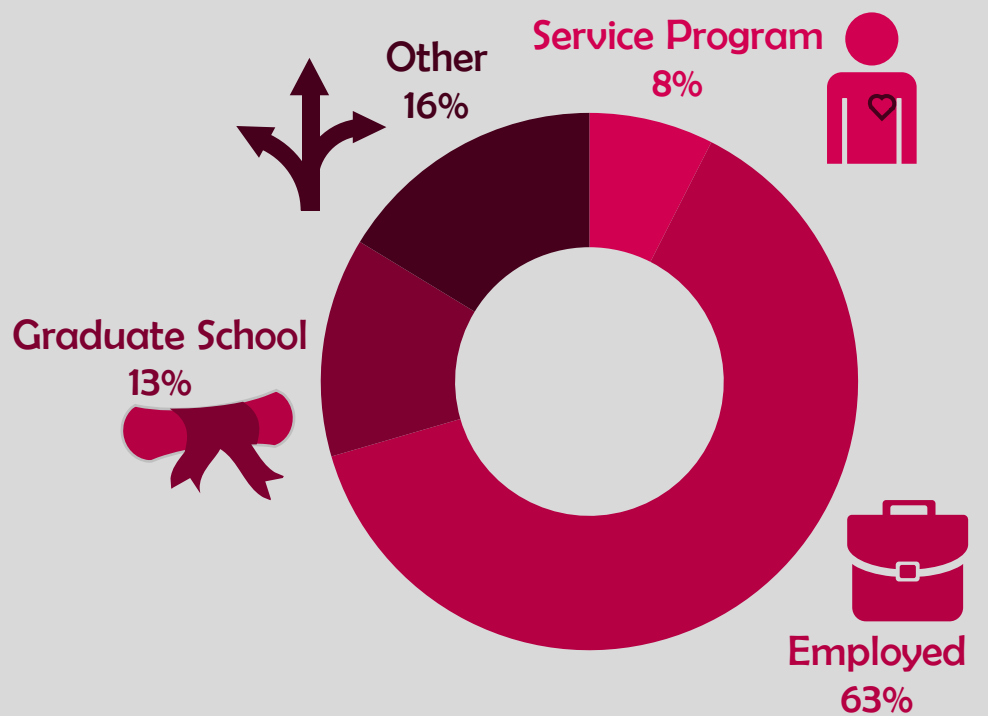
Good to Excellent preparation for...

Career<sup>1</sup> 89%

Life after College<sup>2</sup> 90%

Graduate Study<sup>3</sup> 92%

### Where Are They Now?



**20%** Granted one or more fellowships, teaching assistantships, and/or research assistantships<sup>3</sup>

**95%** Admitted to at least one graduate program<sup>4</sup>

<sup>1</sup> of those working, <sup>2</sup> all graduates, <sup>3</sup> of those attending graduate school, <sup>4</sup> of those who applied for graduate study, <sup>5</sup> of graduates in the job market

The Santa Clara Survey of recent graduates connects employment, education, civic, and satisfaction outcomes to measure the impact of a Santa Clara education. Conducted annually at six-months post-graduation, the 38.7% response rate yields a profile that is representative of the graduating class. Initiated with the class of 2008, these longitudinal data track Santa Clara's progress to ensure an education of citizens and leaders of competence, conscience, and compassion.

Source: first-time, four-year graduates responding to the Survey of Recent Graduates in 2010. For additional information, see [www.scu.edu/ir/data/student-outcomes](http://www.scu.edu/ir/data/student-outcomes) or contact: [institutionalresearch@scu.edu](mailto:institutionalresearch@scu.edu)

# Santa Clara University

## Class of 2010

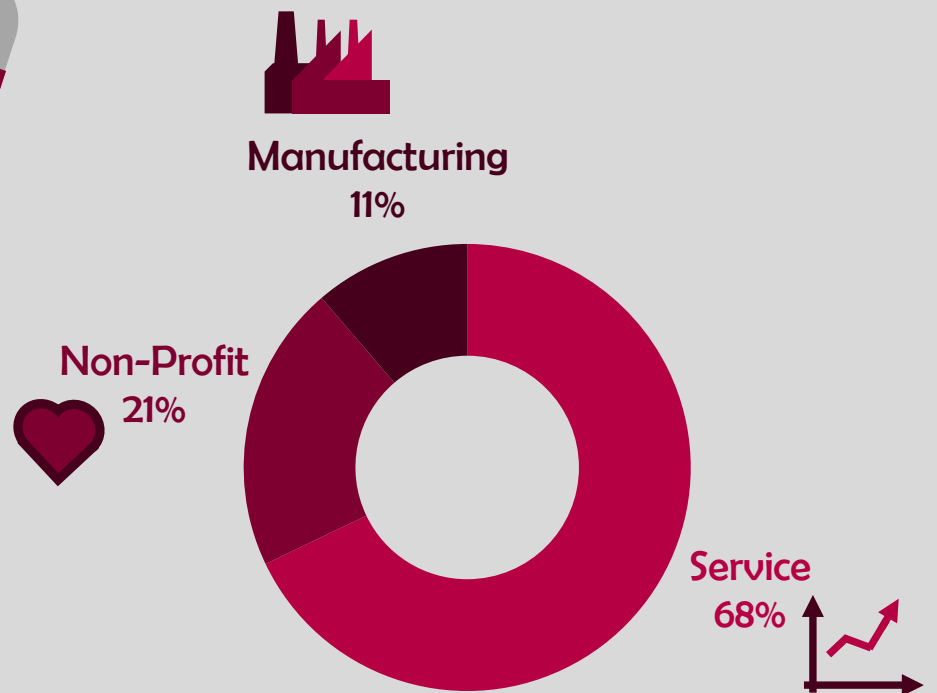
College of Arts and Sciences

Arts and Humanities

### Workforce Statistics



### Sectors of Employment<sup>1</sup>



Note: Percentages may not add to 100 due to rounding

### Graduates Rate

SCU

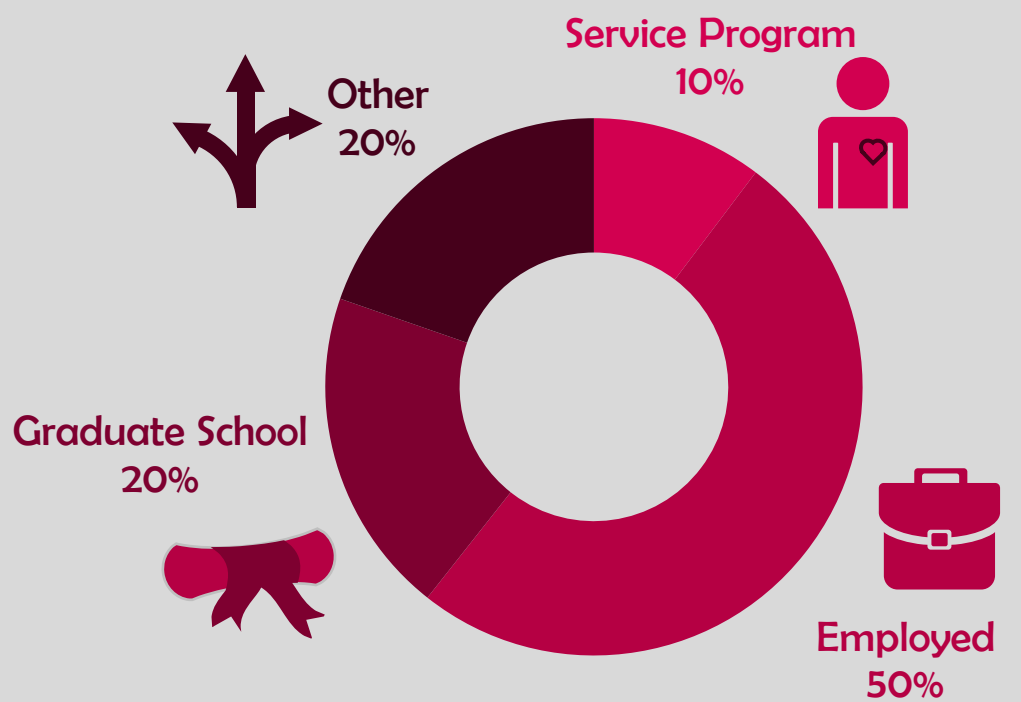
Good to Excellent preparation for...

Career<sup>1</sup> 83%

Life after College<sup>2</sup> 90%

Graduate Study<sup>3</sup> 90%

### Where Are They Now?



15%

Granted one or more fellowships, teaching assistantships, and/or research assistantships<sup>3</sup>

96%

Admitted to at least one graduate program<sup>4</sup>

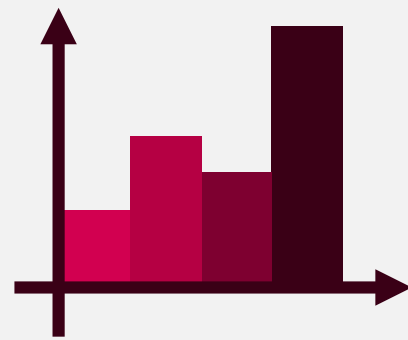
<sup>1</sup> of those working, <sup>2</sup> all graduates, <sup>3</sup> of those attending graduate school, <sup>4</sup> of those who applied for graduate study, <sup>5</sup> of graduates in the job market

The Santa Clara Survey of recent graduates connects employment, education, civic, and satisfaction outcomes to measure the impact of a Santa Clara education. Conducted annually at six-months post-graduation, the 38.7% response rate yields a profile that is representative of the graduating class. Initiated with the class of 2008, these longitudinal data track Santa Clara's progress to ensure an education of citizens and leaders of competence, conscience, and compassion.

Source: first-time, four-year graduates responding to the Survey of Recent Graduates in 2010. For additional information, see [www.scu.edu/ir/data/student-outcomes](http://www.scu.edu/ir/data/student-outcomes) or contact: [institutionalresearch@scu.edu](mailto:institutionalresearch@scu.edu)



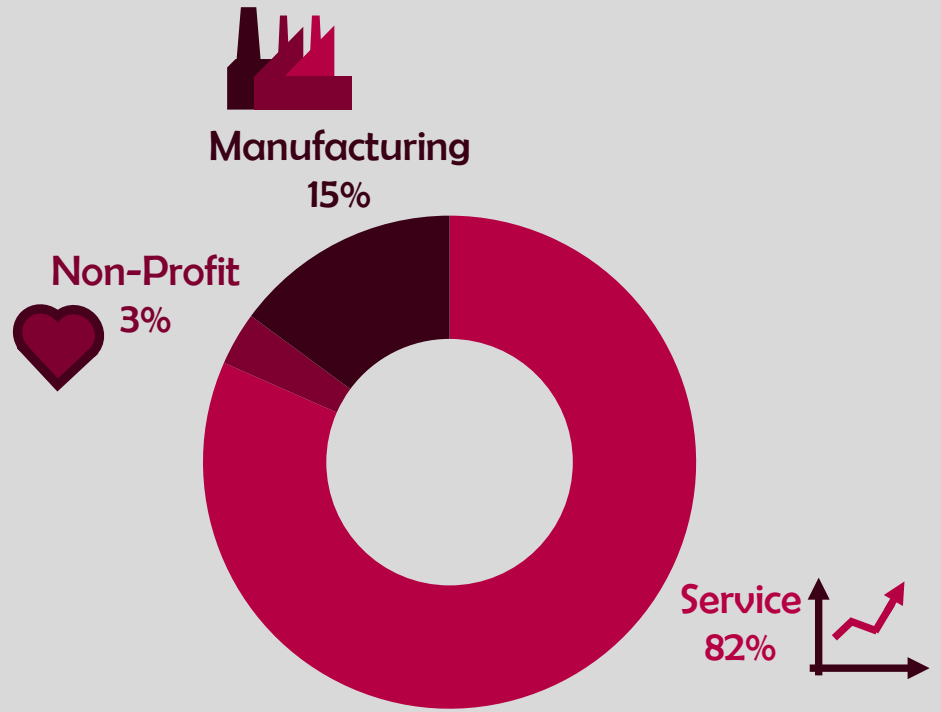
# Santa Clara University Class of 2010



## Leavey School of Business

### Workforce Statistics

### Sectors of Employment<sup>1</sup>



Note: Percentages may not add to 100 due to rounding

### Graduates Rate



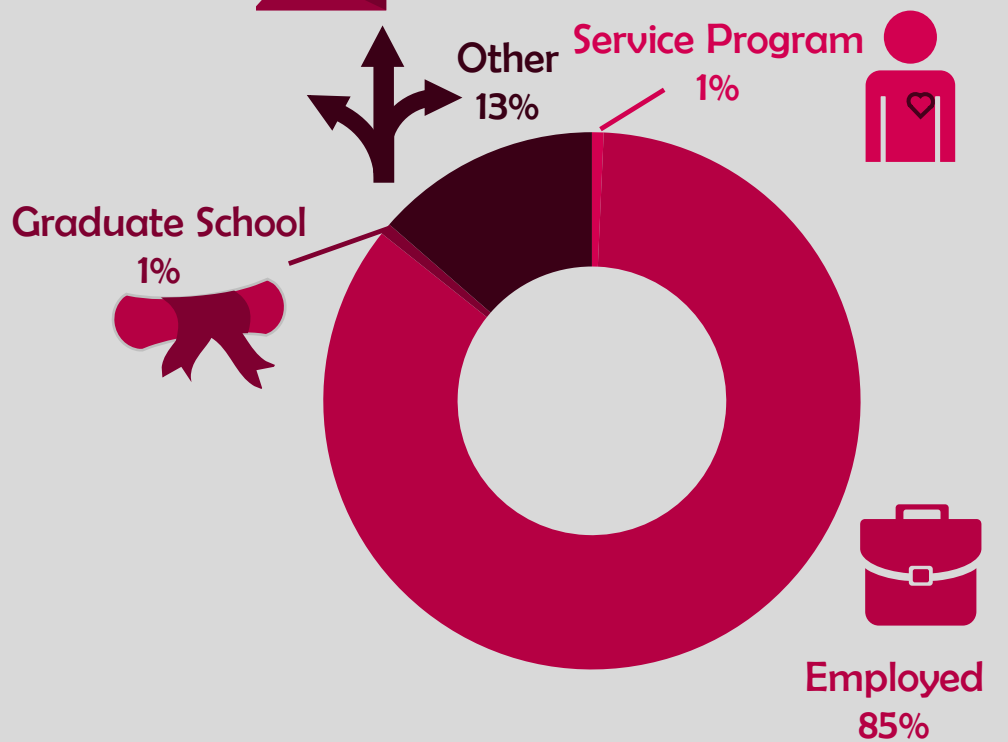
Good to Excellent preparation for...

Career<sup>1</sup> 93%

Life after College<sup>2</sup> 90%

Graduate Study<sup>3</sup> 100%

### Where Are They Now?



0%

Granted one or more fellowships, teaching assistantships, and/or research assistantships<sup>3</sup>

80%

Admitted to at least one graduate program<sup>4</sup>

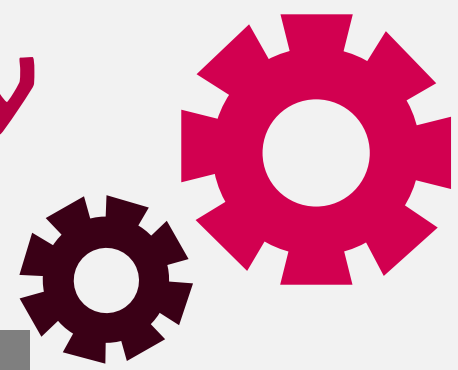
<sup>1</sup> of those working, <sup>2</sup> all graduates, <sup>3</sup> of those attending graduate school, <sup>4</sup> of those who applied for graduate study, <sup>5</sup> of graduates in the job market

The Santa Clara Survey of recent graduates connects employment, education, civic, and satisfaction outcomes to measure the impact of a Santa Clara education. Conducted annually at six-months post-graduation, the 38.7% response rate yields a profile that is representative of the graduating class. Initiated with the class of 2008, these longitudinal data track Santa Clara's progress to ensure an education of citizens and leaders of competence, conscience, and compassion.

Source: first-time, four-year graduates responding to the Survey of Recent Graduates in 2010. For additional information, see [www.scu.edu/ir/data/student-outcomes](http://www.scu.edu/ir/data/student-outcomes) or contact: [institutionalresearch@scu.edu](mailto:institutionalresearch@scu.edu)



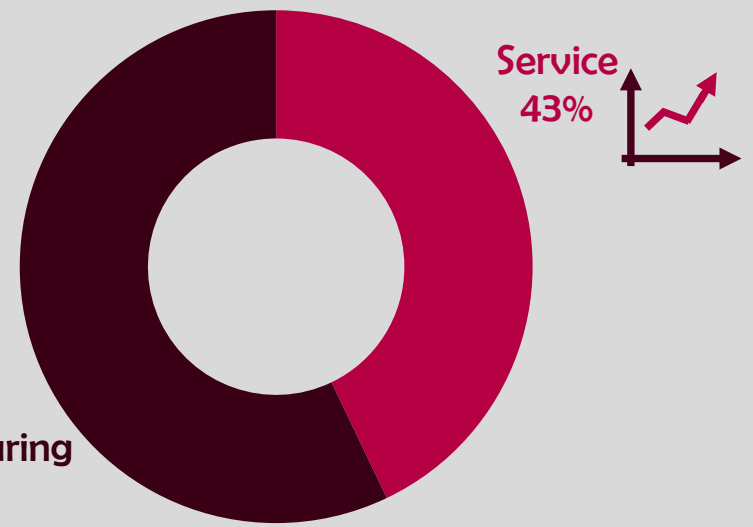
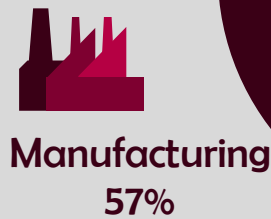
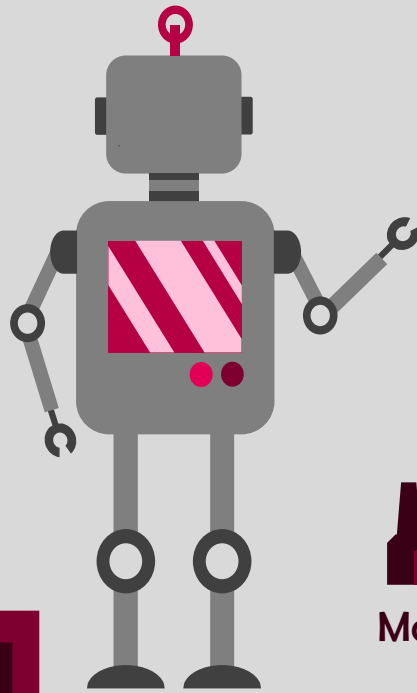
# Santa Clara University Class of 2010



## School of Engineering

### Workforce Statistics

### Sectors of Employment<sup>1</sup>

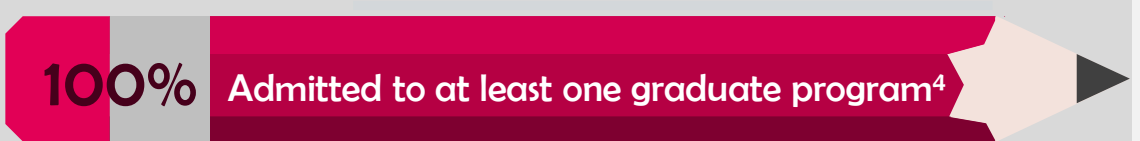
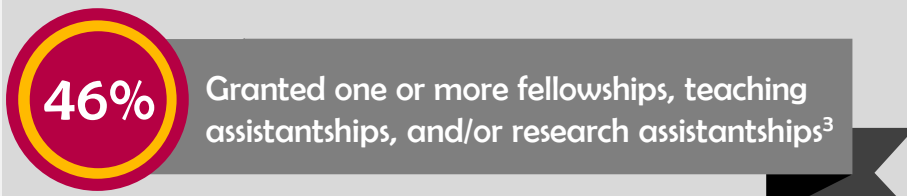
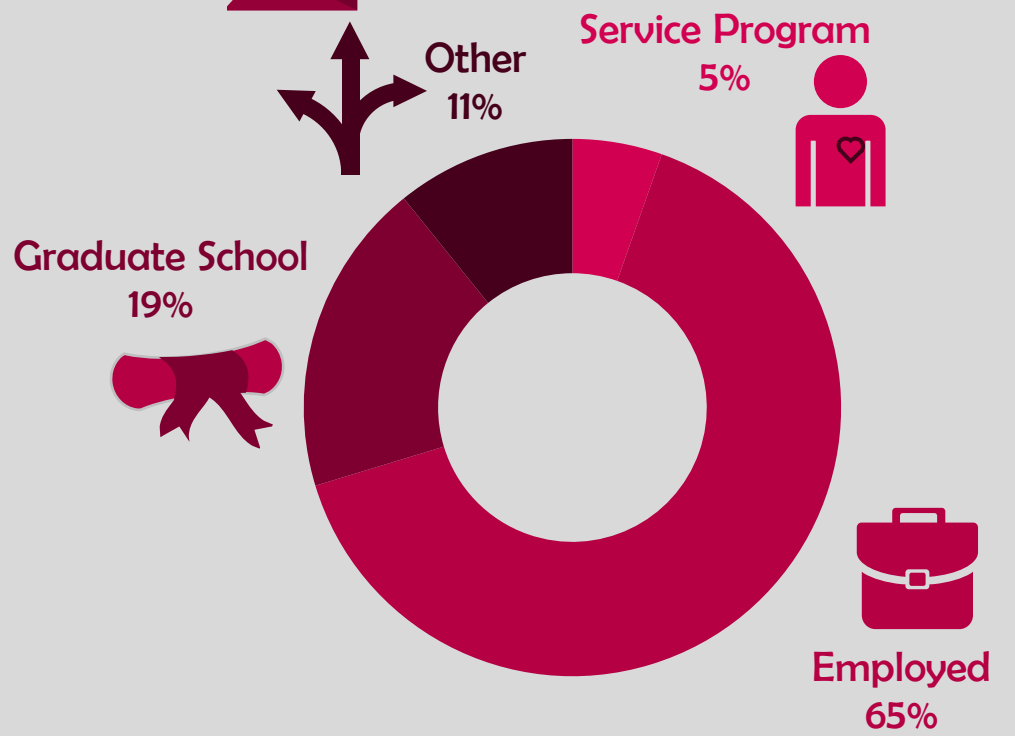


Note: Percentages may not add to 100 due to rounding

### Graduates Rate SCU

- Good to Excellent preparation for...
  - Career<sup>1</sup> 86%
  - Life after College<sup>2</sup> 97%
  - Graduate Study<sup>3</sup> 83%

### Where Are They Now?



<sup>1</sup> of those working, <sup>2</sup> all graduates, <sup>3</sup> of those attending graduate school, <sup>4</sup> of those who applied for graduate study, <sup>5</sup> of graduates in the job market

# Santa Clara University

## Class of 2010

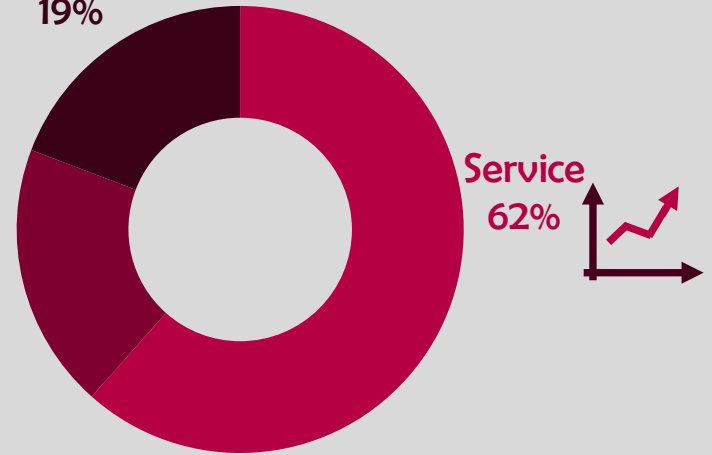
College of Arts and Sciences

Math and Natural Sciences

### Workforce Statistics



Manufacturing  
19%



Note: Percentages may not add to 100 due to rounding

### Graduates Rate



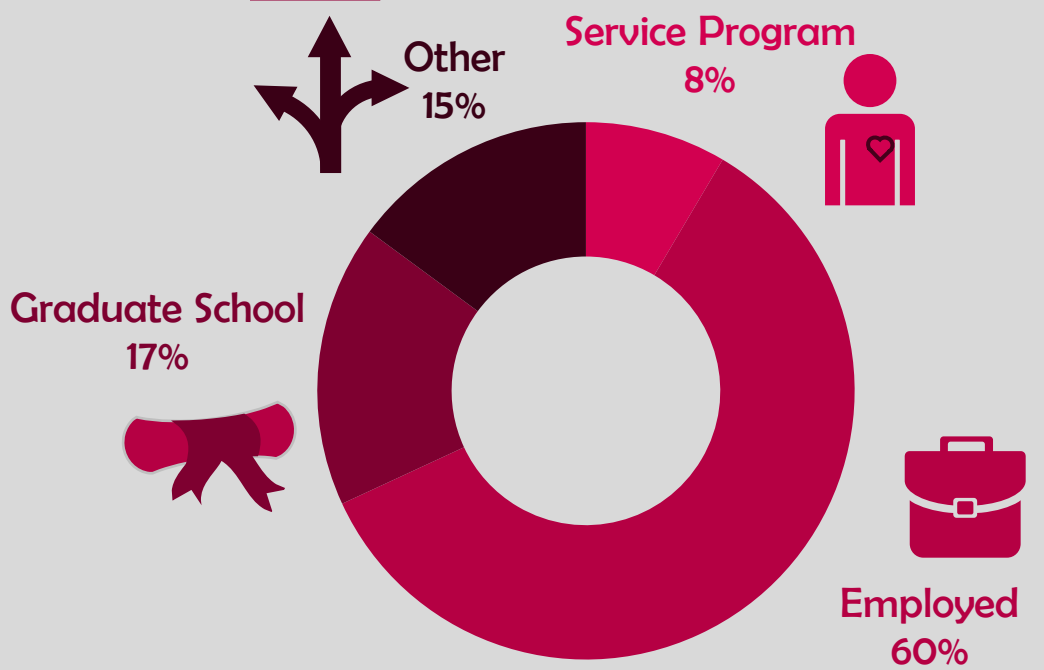
Good to Excellent preparation for...

Career<sup>1</sup> 85%

Life after College<sup>2</sup> 85%

Graduate Study<sup>3</sup> 88%

### Where Are They Now?



25% Granted one or more fellowships, teaching assistantships, and/or research assistantships<sup>3</sup>

94% Admitted to at least one graduate program<sup>4</sup>

<sup>1</sup> of those working, <sup>2</sup> all graduates, <sup>3</sup> of those attending graduate school, <sup>4</sup> of those who applied for graduate study, <sup>5</sup> of graduates in the job market

The Santa Clara Survey of recent graduates connects employment, education, civic, and satisfaction outcomes to measure the impact of a Santa Clara education. Conducted annually at six-months post-graduation, the 38.7% response rate yields a profile that is representative of the graduating class. Initiated with the class of 2008, these longitudinal data track Santa Clara's progress to ensure an education of citizens and leaders of competence, conscience, and compassion.

Source: first-time, four-year graduates responding to the Survey of Recent Graduates in 2010. For additional information, see [www.scu.edu/ir/data/student-outcomes](http://www.scu.edu/ir/data/student-outcomes) or contact: [institutionalresearch@scu.edu](mailto:institutionalresearch@scu.edu)

# Santa Clara University

## Class of 2010

College of Arts and Sciences

Social Sciences

### Workforce Statistics



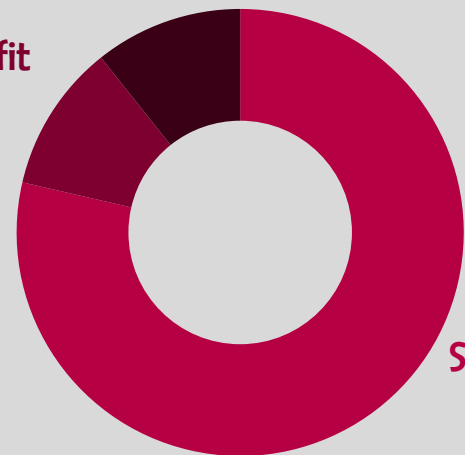
### Sectors of Employment<sup>1</sup>



Manufacturing  
11%



Non-Profit  
11%



Service  
78%

Note: Percentages may not add to 100 due to rounding

### Graduates Rate



Good to Excellent preparation for...

Career<sup>1</sup> 86%

Life after College<sup>2</sup> 90%

Graduate Study<sup>3</sup> 100%

### Where Are They Now?

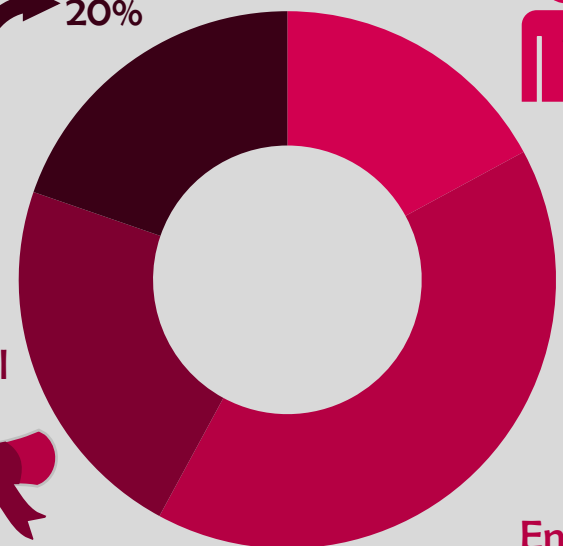
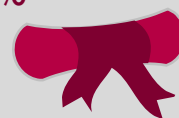


Other  
20%

Service Program  
17%



Graduate School  
22%



Employed  
41%

**12%** Granted one or more fellowships, teaching assistantships, and/or research assistantships<sup>3</sup>

**94%** Admitted to at least one graduate program<sup>4</sup>

<sup>1</sup> of those working, <sup>2</sup> all graduates, <sup>3</sup> of those attending graduate school, <sup>4</sup> of those who applied for graduate study, <sup>5</sup> of graduates in the job market

The Santa Clara Survey of recent graduates connects employment, education, civic, and satisfaction outcomes to measure the impact of a Santa Clara education. Conducted annually at six-months post-graduation, the 38.7% response rate yields a profile that is representative of the graduating class. Initiated with the class of 2008, these longitudinal data track Santa Clara's progress to ensure an education of citizens and leaders of competence, conscience, and compassion.

Source: first-time, four-year graduates responding to the Survey of Recent Graduates in 2010. For additional information, see [www.scu.edu/ir/data/student-outcomes](http://www.scu.edu/ir/data/student-outcomes) or contact: [institutionalresearch@scu.edu](mailto:institutionalresearch@scu.edu)