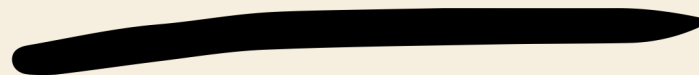




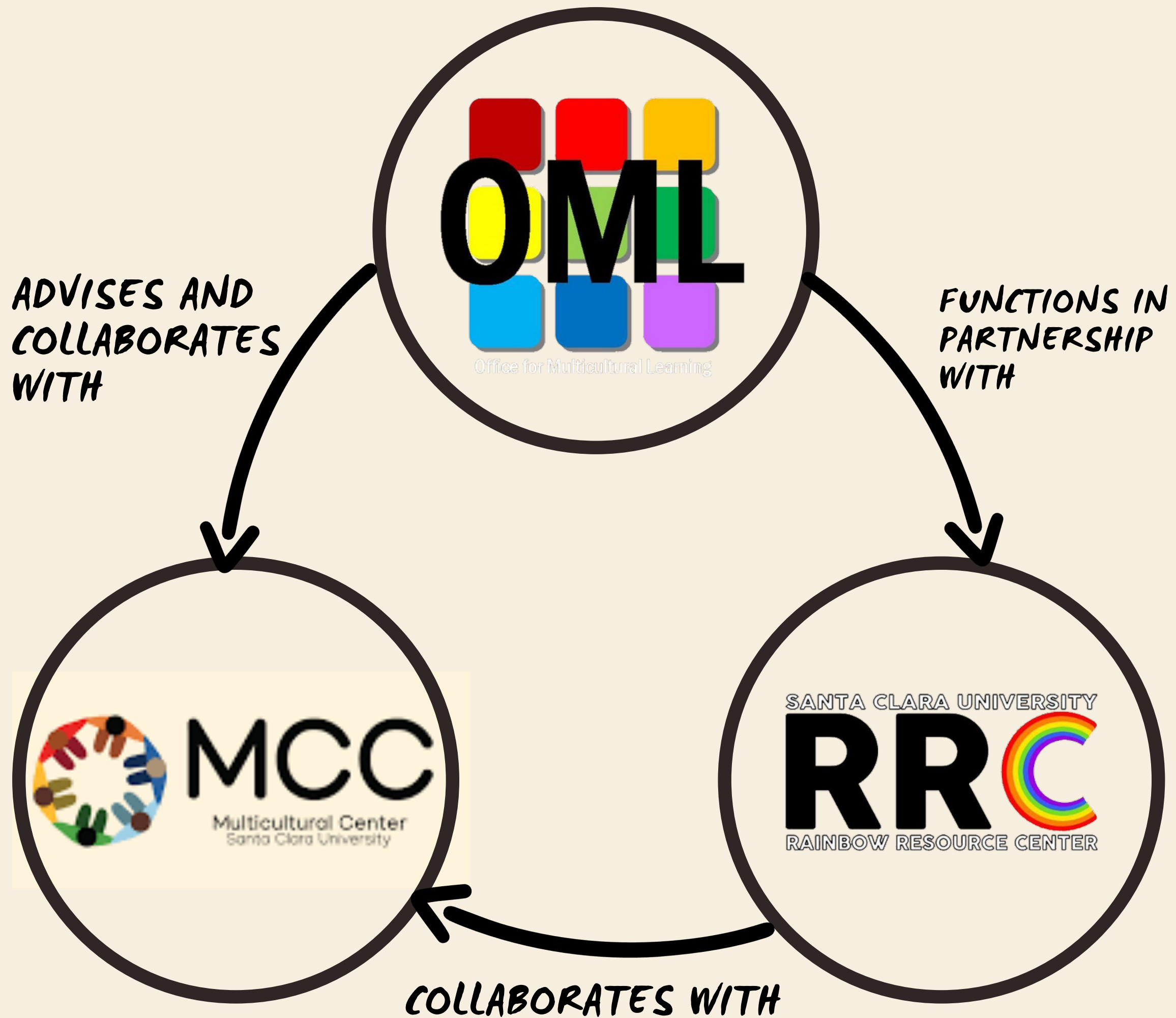
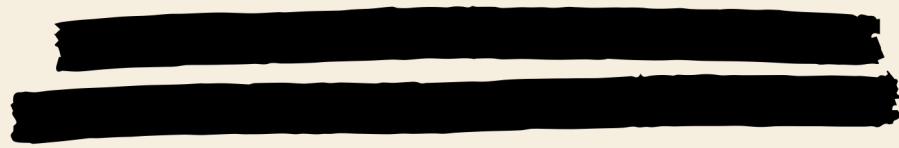
OCHO

BEING THE BEST BRONCO

WITH:
OFFICE FOR MULTICULTURAL LEARNING



WHO'S WHO?



CULTURAL APPROPRIATION

WHY IS IT A PROBLEM?

01 *It trivializes violent historical oppression.*

02 *IT LETS PEOPLE SHOW "LOVE" FOR THE CULTURE BUT REMAIN PREJUDICED AGAINST PEOPLE.*

03 *IT SPREADS MASS LIES ABOUT MARGINALIZED CULTURES AND PERPETUATES RACIAL STEREOTYPES.*

04 *IT LETS PRIVILEGED PEOPLE PROFIT FROM OPPRESSED PEOPLE'S LABOR.*



Hate Crimes

Definable Crimes such as Threats of Violence, Property Damage, Personal Injury and other Illegal Conduct.

Bias Incidents

Any speech, act, or harassing action that targets, threatens, or attacks an individual or group because of their actual or perceived status protected by law.

Microaggressions

Brief everyday exchanges that send denigrating messages to an individual of a target group.

MOTIVATES



IMPACTS OF CULTURAL APPROPRIATION

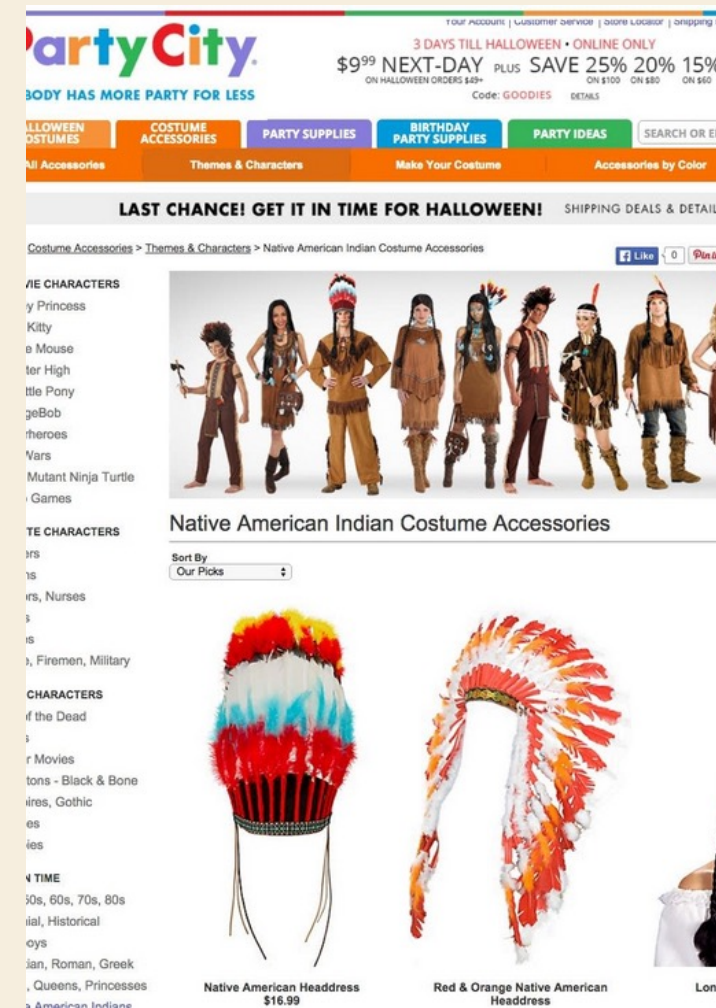
AT THE NEXT THEMED PARTY, ASK YOURSELF



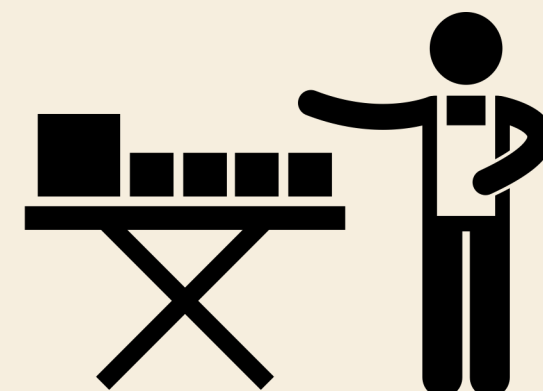
Question 2
Why am I wearing it?



Question 1
What culture does this style reference, and what is my relation to that culture?



Question 3
Who is selling this product?
...



Question 4
How accurate and respectful is it to the source?



IF YOU DON'T KNOW THE ANSWERS TO THESE QUESTIONS, OR IF WHEN ANSWERED HONESTLY THEY REVEAL HISTORICAL, RACIAL, POLITICAL AND/OR RELIGIOUS IMPLICATIONS, IT'S BEST TO MOVE ON WITHOUT THE ITEM(S).

REMEMBER:

**CULTURE IS NOT
A COSTUME!**



Unintentional CONSEQUENCES



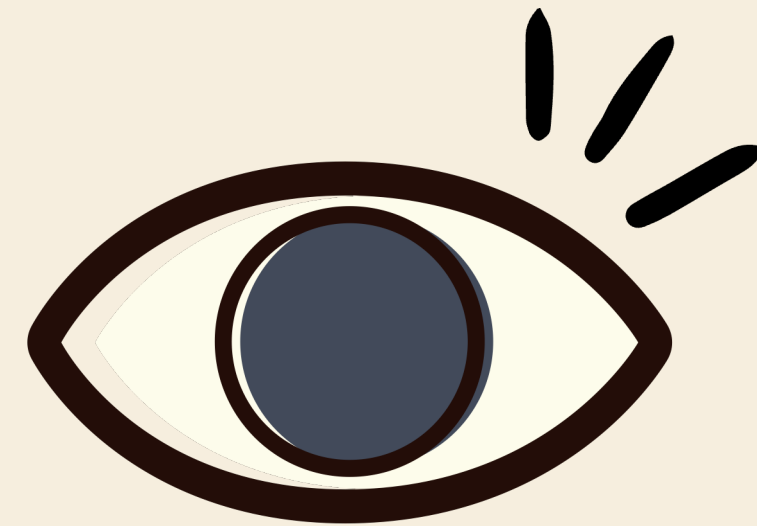
01

Closed parties

- Assuming students of color are not SCU students

02

Skewed perceptions of communities of color, culture, and value



03

Lack of BIPOC representation in off-campus community



04

Perpetuation of harmful and limiting stereotypes



WHAT CAN YOU DO?

COME
VISIT
and
LEARN
MORE!

OFFICE FOR MULTICULTURAL LEARNING

- 832 MARKET ST. (ACROSS FROM SWIG)

RAINBOW RESOURCE CENTER

- BENSON, ROOM 11 (BASEMENT)

MULTICULTURAL CENTER

- SHAPELL LOUNGE (ACROSS FROM BOOKSTORE)

