



Sustainable Landscaping at SCU

Allison Carmody & Leigh Pond

Background

SCU prides herself on a beautiful, vibrant campus. However, as the drought becomes more urgent, the need for equally beautiful, yet more sustaining landscaping has emerged.

To maintain our commitment to the Santa Clara's Climate Neutrality Plan a rethinking and remodeling of the landscape on campus must be instituted.

Goals

- Repurpose all lawn areas not regularly used for special events or student recreation
- Replace current landscape with native or perennial plants that are drought &/or recycled water tolerant
- Implement gardens that increase the presence of wildlife, such as pollinators and birds
- Decrease the need and usage of pesticides and fertilizers
- Maintain the beauty and aesthetic appeal of Santa Clara University campus

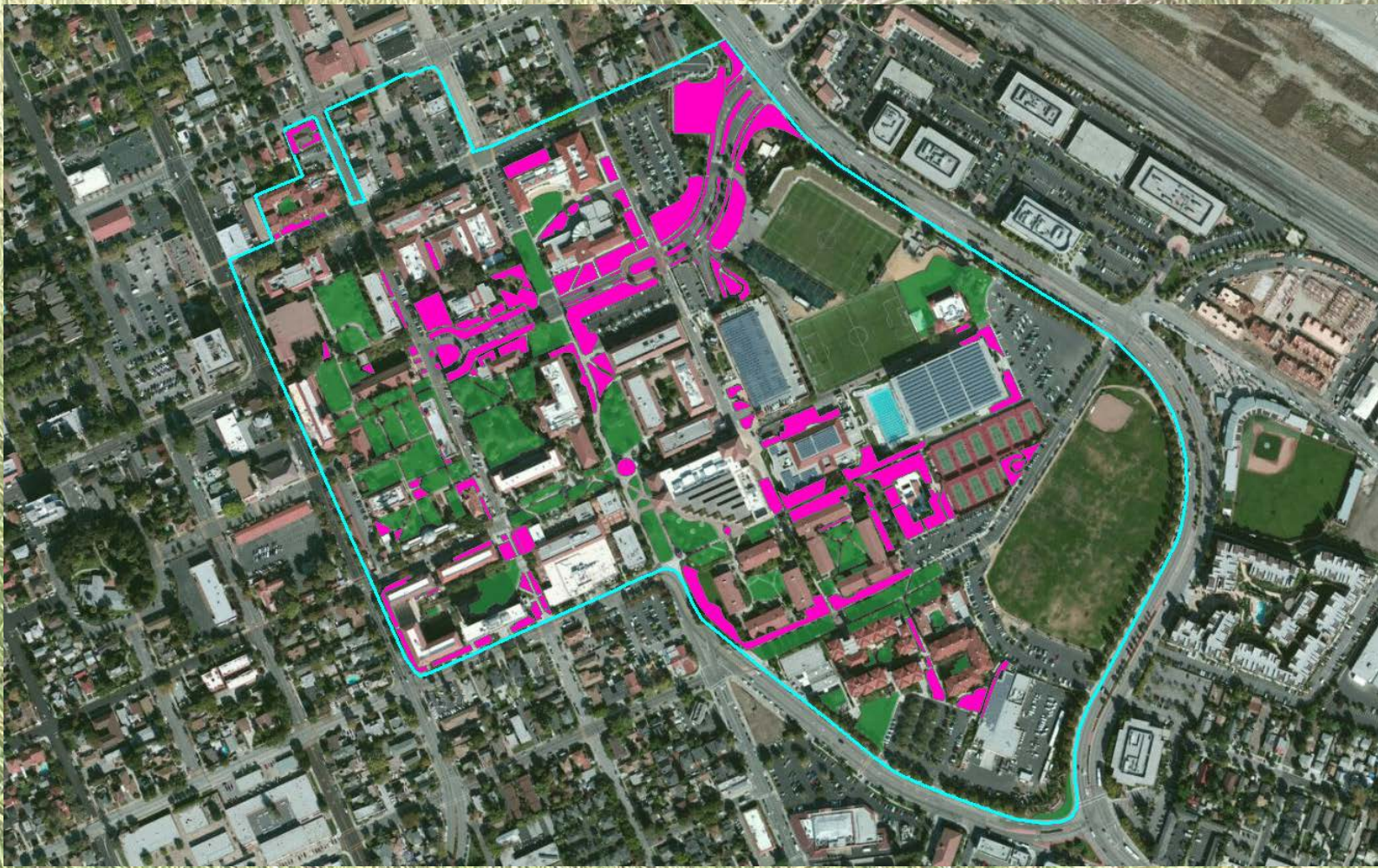
Sustainable Landscape Model





Results

We concluded that 8.31 acres of lawn could be converted into native landscape. Using drought & recycled water tolerant plants, the University would save up to 244,194 gallons of water per watering session.



Recommendations

- In high traffic areas use sedge grasses, which appear as lawn but require significantly less water & maintenance
- Create eating spots, study spaces, and wildlife hotspots
- Have Alumni donate benches and picnic tables to offset costs
- Implement only native and sustainable gardens in areas of new construction

Species	Drought-tolerant	Recycled Water Tolerant	Light needs	Flowering	Attracts Pollinators/ Birds	Color	Plant type	Mature height	Notes
<i>Salvia Spathacea</i>	x	x	partial shade	yes, Mar-May	x	rose/pink flower	perennial	2-3 ft	along walking areas, attracts hummingbirds and pollinators
<i>Lilium pardalinum</i>	x		partial shade/shade	yes, May-Aug	x	speckled orange flowers	perennial	1-5 ft	near walking areas, in beds currently containing rotating annual. Beautiful flowering perfect for visibility during commencement events and orientation
<i>Penstemon speciosus</i>	x		full sun	yes, may-july	x	light to deep blue, lavender/purple	perennial	2 ft	attracts hummingbirds and butterflies
<i>Berberis aquifolium</i>	x		partial shade/shade	winter /spring	x	dusty purple/white	shrub	3-7 ft.	low maintenance, little leaf litter, very durable. Will tolerate full sun if needed.
<i>Cistus x purpureus</i>	x	x	full sun	spring	x	purple	shrub	4-6 ft.	scenty!
<i>Ceanothus gloriosus</i>	x	x	sun	spring		dark blue	shrub	2-3 ft	spreads 4-6 ft
<i>Ceanothus thyrsiflorus</i>	x		sun/partial shade	winter/spring	x	white/blue	shrub	dependent on type, 3-30 ft	excellent for attracting wildlife, native to the Bay area
<i>Epilobium canum</i>	x	x	sun	yes, Jul-Oct	x	red flowers	perennial	.5-2 ft	areas of well-drained soil; red flowers a perfect option for start of school use (decrease dependence on annuals)
<i>Ribes malvaceum</i>	x		sun/partial shade	yes, oct-mar	x	pink/purple blooms	shrub	10 ft	line large preciously grassy areas for places of shade and interest
<i>Galvesia speciosa</i>	x	x	sun/partial shade	yes, may-sept	x	red blooms	shrub	3 ft	low-lying shrub, great for walkways and slight visual appeal for larger areas
<i>Salvia sonomensis</i>	x	x	sun/partial shade	yes	x	lavendar flowers	ground cover	1-2 ft	aromatic foliage
<i>Acacia redolens</i>	x	x	full sun	yes, spring		yellow	ground cover	1-2 ft	spreads 10-15 ft., blossoms are vanilla scented.
<i>Arctostaphylos uva-ursi</i>	x		sun/partial shade	yes	x	red berries, white-pink blooms	ground cover	1 ft	very low-lying (max 1 foot), has shiny red berries, waxy looking leaves and white-pink blooms. great replacement for large stretches of turf grass

Species	Drought-tolerant	Recycled Water Tolerant	Light needs	Flowering	Attracts Pollinators/ Birds	Color	Plant type	Mature height	Notes
<i>Eschscholzia californica</i>	x		sun	yes, cool season	x		perennial		best to be placed in a larger space, can be used as groundcover. works fantastic in area with low soil fertility or areas with little soil. Will continue to germinate and act as a perennial once established.
<i>Carex tumulicola</i>	x		either sun or shade	blooms in spring	x		sedge grass	6-1 ft	grows in clumps and fans out 1-2 feet. Excellent for areas that still need to appear grass covered or uniform.
<i>Carex pansa</i>	x		full sun or very slight shade		x		sedge grass		One of the most popular lawn substitutes in America. Resilient to many pests and disease (less biocide use!) Maintains green color despite lack of rains year round. Very durable, even for playing sports or parking cars. Campus wide integration of this sedge in place of turf grass is highly encouraged.
<i>Carex praegracilis</i>		x	full sun/partial shade	blooms in spring	x		sedge grass	6-8 in	grows 6-8 inches, fans its stalks. Not quite drought tolerant but only needs moderate watering (still less than classic turf grass). Works in areas with moderate foot traffic. Good supplement for sitting areas or small patches of conversion areas.



Acknowledgements

We would like to extend a great thank you to Chris Young, Gary Vargas, Justen Whittall, and Cathy Blake who were all fantastic in providing us with key information for a successful project.