



SANTA CLARA UNIVERSITY

INCLUSIVE EXCELLENCE

DIVISION

Bronco Parents

Orientation 2025

Our Time Together



1

Welcome

2

Inclusive Excellence
Overview

3

Panel

4

Questions | Answers

How may I serve as a resource?

Inclusive Excellence wants to be a resource for your student during their time at SCU.

Whether it's about academics, getting involved, or just navigating campus life-how can we assist in making things easier during their time here?

Shá Duncan Smith, Vice President, Inclusive Excellence



Inclusive Excellence Vision & Mission



Vision

The Inclusive Excellence Division will nurture a conscience, compassionate and competent Santa Clara University Community, aligned with the Jesuit mission, to foster unity and inclusive justice.



Mission

The Inclusive Excellence Division *empowers and equips* SCU community members, university units, and campus partners with the *education and skill sets* to prioritize and incorporate equity and belonging into every aspect of living, working, and learning at SCU.

Inclusive Excellence Includes You



We Accompany

- Every member of the Santa Clara University community with compassion and intentionality, working together to cultivate a just, humane, inclusive, and sustainable environment in which *all* can learn, thrive, and belong..



We Honor

- The sacred dignity and unique perspectives of *each* individual and community, recognizing that empathy, humility, vulnerability, and open-hearted dialogue are essential to the flourishing of our shared humanity and common good.



We Lead

- In the Ignatian tradition—*reflectively and with purpose*—committed to equity, authenticity, and relationships rooted in trust. Through discernment and action, we seek to advance justice in all that we do.



We Believe

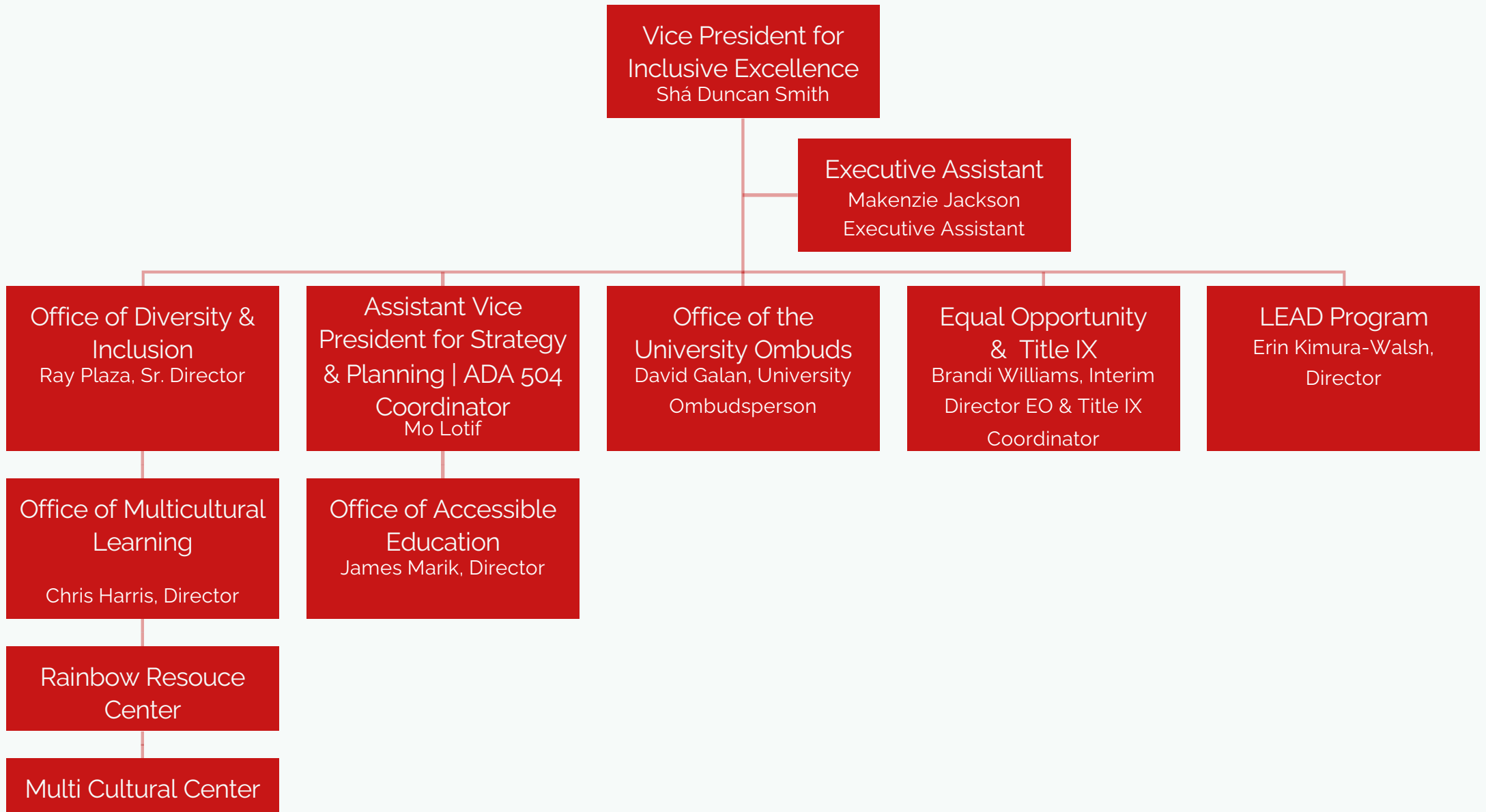
- That creating an equitable and compassionate community *demand*s a *deep ethic of care*, a commitment to removing barriers, and a shared responsibility for the growth and transformation of individuals and institutions alike.

Inclusive Excellence

Commitment

We are committed to co-creating a safe, inclusive, and collaborative university rooted in our Jesuit values, where all voices are uplifted, education and dialogue is transformative, and a faith that does justice is pursued not only within our campus but in the world beyond it.





Inclusive Excellence Services

Opportunities & Resources Available for Your Students



LEAD Scholars Program

- Program is by application for both first-year and transfer first generation students with the goal of supporting them throughout their college career



Office for Multicultural Learning (OML)

- Education and Programming
 - Promoting social justice, building bridges across all communities, and celebrating differences
 - Educate the whole person within the context of Jesuit values.
- Rainbow Resource Center
- Multicultural Center



Office of Accessible Education

- Support students with disabilities so they can participate fully in campus life, its programs, and activities.
- Provide academic accommodations, support services, and disability-related educational programming.

Inclusive Excellence Services

Opportunities & Resources Available for Your Students



Office for Diversity and Inclusion

- The Office for Diversity and Inclusion (ODI) serves as a conduit for community and belonging efforts throughout the campus. It has a strong emphasis area with faculty, staff, and broader campus climate including students and other stakeholders, including data management and assessment.



Office of Equal Opportunity | Title IX

- The Office of Equal Opportunity and Title IX provides education, coordinates supportive measures, investigates reports, and resolves complaints of protected class discrimination, Title IX sexual harassment, and other civil rights-based offenses.

Inclusive Excellence Services

Opportunities & Resources Available for Your Students

Frequently Asked Questions about SCU Accommodations



<https://rb.gy/0bm87x>



Thank you kindly for your time. If you have any additional questions please reach out to me directly:

Shá Duncan Smith

Vice President for Inclusive Excellence

Santa Clara University

500 El Camino Real

Santa Clara, CA 95053

P. (408) 554-5131

E. tssmith@scu.edu

E. inclusiveexcellence@scu.edu

THANK YOU.