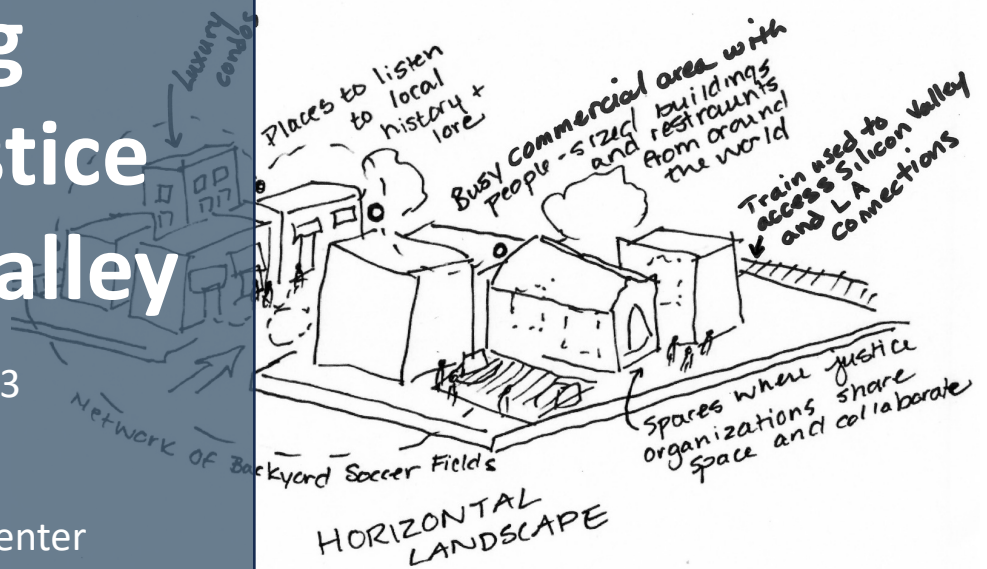


Seeking Spatial Justice in Silicon Valley

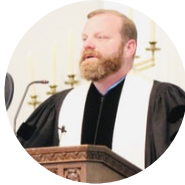
October 24, 2023
6:00-7:30 PM
Williman Room
Benson Memorial Center



Our Panelists



Susan Ellenberg
District 4 Supervisor
& President, Santa Clara County
Board of Supervisors



Rev. Dr. Bryan Franzen
Westminister Presbyterian Church
San José, CA



Miah Jeffra
Author & Lecturer in English
Santa Clara University



Pastor Leslie Nieves, LMFT
CWC Life/Vida
San José, CA



Dr. Todd Perreira
Lecturer in Humanities
San José State University

Spatial justice—"the fair and equitable distribution in space of socially valued resources and the opportunities to use them" (Soja 2009)—is profoundly impacted by urban development. Whose neighborhoods are most impacted by the construction of office buildings, commercial areas, entertainment venues, and luxury housing? Or the redistribution of public transportation hubs, walkways, and public spaces? Which residents are winners and who loses out when new development puts upward pressure on housing costs, shuffles employment opportunities, or changes the cultural, ethnic, and religious character of neighborhoods? **What role does religion play** in addressing spatial injustices like housing insecurity or homelessness, food insecurity, lack of access to educational resources, lack of access to addiction and mental health services, and the displacement of cultural and communal resources?"

In this panel discussion, religious leaders, scholars, writers, and policy makers will explore the place of religion in cultivating spatial justice in Silicon Valley during a time when rapid development unfolds against a backdrop of increasing homelessness, a housing affordability crisis, gentrification, and other urban challenges.

In compliance with the ADA 504, please direct your accommodation requests at least 72 hours prior to the event to religiousstudies@scu.edu.