



# FALL 2024 COURSE CATALOG

Santa Clara University

# Osher Lifelong Learning Institute

## REMINDER:

It is important to remember that **all communications from OLLI@SCU** including room change updates, announcements for events held on campus, our monthly newsletter, and important changes to events from the OLLI office, **will be sent electronically only**. Please let us know if your email address changes or you are not receiving our emails. Also note **that if you unsubscribe from any of our emails, you will unsubscribe from all OLLI communications**.



## Learning for the Joy of Learning

OLLI is lifelong learning for adults - everyone is welcome.

Dear OLLI Members,

As we wrap up the summer session in August, we are thrilled to kick off the 2024-2025 academic year! This fall marks the beginning of our 21st year as a thriving, sustainable program within the College of Arts and Sciences, and we couldn't be more excited to continue this journey with you.

Our dedicated volunteer Curriculum Committee has worked tirelessly, devoting their time and energy to carefully craft an enriching selection of courses. These offerings are designed with you, our members, in mind, making the process of choosing classes both enjoyable and stimulating. We hope you're looking forward to exploring new subjects, meeting like-minded peers, and embarking on another season of learning and growth.

**Membership renewal** began on August 1, 2024. If you haven't yet renewed, there's still time to join us for the fall! We offer in-person, online, and hybrid courses, along with events and Special Interest Groups, providing numerous opportunities to reconnect with friends and discover new passions.

We're especially excited to invite you to our **OLLI EXPO** this September! Join us on Tuesday, September 10, 2024, for this fantastic event where you can learn more about what our program has in store for the fall. The EXPO is open to all adults, so bring along friends who might be interested in joining. It's the perfect chance to share experiences, explore new interest groups, and make new connections. Whether you're a returning member or just curious about what OLLI has to offer, the EXPO will help you engage with our vibrant community and find the activities that best suit your interests. **Remember, membership is required to participate.**

### Important Dates to Remember:

- **Membership Registration:** Ongoing and started August 1, 2024
- **Course Registration:** September 4, 2024
- **OLLI Expo:** Tuesday, September 10, 2024 (10:00 a.m. - 12:00 p.m.)
- **Fall Quarter Classes Begin:** September 24, 2024 at 10:00 a.m.

We know many of you are eager to get started and have been stopping by our offices during class breaks, asking when the next catalog will be released or when you can expect a sneak peek at upcoming courses. Please know that we're working hard to finalize everything, and your excitement is truly appreciated! Rest assured, we will get the information out to you as soon as possible so that you can plan, register, and dive into another great quarter with OLLI.

It really does take an OLLI village to make all of this happen, and we are grateful for your continued enthusiasm and support. Together, we can look forward to a fantastic fall filled with learning, community, and personal growth.

The OLLI office  
Andrea, Grace, Lindsey, and Maya

- ✓ No Tests
- ✓ No Grades
- ✓ No Pressure
- ✓ Learning for the Joy of Learning

## CURRICULUM CONNECTIONS



Welcome to our 21st year of OLLI@SCU. I am Sarah Flowers, your new Curriculum Committee Chair, and I want to start by thanking Carol Ross, who has served as chair for the past three years. Fortunately, she is remaining on the committee, as well as taking on new responsibilities as chair of the Volunteer Membership Council.

I am very excited about our offerings for the Fall. We have several new instructors, as well as a number of long-time favorites. With the general election coming up in November, you may want to consider taking several related courses: Bob Senkewicz will be talking about the history of U.S. elections, Margaret Russell will be back to talk about SCOTUS decisions, Michele Bertolone will give us some historical examples of violence in the public square, and new instructor Terry McAteer will discuss the electoral college as well as the 1896 election and its connections to *The Wizard of Oz*. We'll have a chance to explore the Vietnamese immigrant experience with Hien Do, Germany after World War II with Greg Tomlinson, and populist movements around the world with Shawn Nichols.

If you love music, films, and the theater, we have plenty of things for you! The SCU theater department will be presenting Shakespeare's *Twelfth Night* this fall, and OLLI members can prepare by taking Maura Tarnoff's course on the play, as well as director Jeffrey Bracco's behind-the-scenes look at the production (which comes with a ticket to the play). Plus, Scot Hanna-Weir will prepare members for the SCU Chorale's performance of *The Christmas Truce*; that course comes with a ticket to the concert. Besides those, John Kendall Bailey will continue his series on American Musical Theater with a course on theater from the 1970s onward, Richie Unterberger will offer a course on the 1960s "British Invasion" in pop music, Michael Whalen will screen five documentaries and discuss how they interpret truth, and Barbara Clayton is back with a look at classic theater and the Sophoclean hero.

Just in time for football season, retired *Mercury News* sports writer Mark Purdy will be joining us with a course on the San Francisco 49ers. Janet Fletcher, noted cheese expert, will help us appreciate cheese and cheesemaking. Bebo White is back to look at the history of Silicon Valley, and Diane Levinson will lead a guided tour of public art on the Stanford campus, as well as offering a course on the Stanford art museums.

Finally, we'll look at quantum mechanics with Awanish Mishra, and we'll have two courses on Artificial Intelligence—a one-session course on ethics and AI with Irina Raicu from the Markkula Institute and two hands-on sessions on AI tools with Anna Yang and Andrew Carlos from SCU's Library.

See you in class!

Sarah Flowers  
Curriculum Committee Chair

## IN THIS CATALOG

<b>Osher Information</b>	3
<b>Fall 2024 Course Offerings</b>	4-18
<b>OLLI Expo 2024</b>	19
<b>About OLLI National Resource Center and OLLI@SCU</b>	20
<b>Special Interest Groups</b>	21-22
<b>Course Registration Instructions</b>	23-26
<b>Membership Benefits</b>	27
<b>Santa Clara University Campus Map, Parking Information</b>	28-29

# OSHER INFORMATION

## What is the Osher Lifelong Learning Institute (OLLI)?

OLLI at Santa Clara University is one of 125 Osher Lifelong Learning Institutes made possible by generous grants and endowments from the Bernard Osher Foundation. These institutes are located from Maine to Hawaii, and collectively they have over 96,000 members.

OLLI is a community of adult learners. Instruction is at the university level, but no particular educational background is required. There are no tests, grades, or papers. The classes you select may have some elective reading or other preparation. To participate in classes, you must be a member of OLLI.

## Where are classes held and who teaches the classes?

Classes are currently being held “live” online via Zoom, in-person, or as a hybrid on campus. Most of our in-person classes are held in Guadalupe Hall, Rooms 150/151. Current and retired faculty members and independent scholars lead the classes. Classes are recorded as described below.

## What is the price per class?

The fee for each class, activity, or program is located in each class description. Long classes range from \$125 to \$155 and short classes range from \$30 to \$90. The prices are also listed on the online registration system.

## If I can't come to a class, can I get a refund?

OLLI@SCU is no longer able to offer refunds for a class or event you cannot attend. The refund exceptions are: a class that is canceled by the OLLI office, hospitalization, death, or a significant life event that prevents the stricken individual from attending or participating.

## How do I register?

Registration is online at [scu.edu/osher](http://scu.edu/osher). This is a secure site and is the fastest and easiest way to register. Additional information is located on pages 21 and 22 of this catalog.

## SUPPORT OUR OLLI

Help us reach our campaign goal of \$15,000 for the 2024-25 year!

OLLI at Santa Clara University is the premier lifelong learning institute here in the South Bay. We have attained this status because of your ideas, participation, and gifts, all of which are critical in creating a program that speaks to the needs and interests of our OLLI community.

The fee for your classes is well below the actual cost, and we rely on our income from the endowment and member donations to cover the balance. We appreciate your support to keep OLLI vibrant and affordable.

Your gifts directly impact your experience, as additional funds help us ensure the highest quality of guest speakers, instructors, special programming, technology upgrades, and office infrastructure.

The Osher Foundation requires all OLLIs to fundraise to assure sustainability of their programs around the country.

We value your participation on all levels for our continued success. The Osher Foundation sets our fundraising goal each year and expects at least 10% of our members to participate.

## Important Class Reminders:

- The mask policy is determined by the instructor. No food or drinks, except for water, are permitted in the classrooms.
- There will be no refunds if courses are converted from in-person to Zoom, if an instructor requests a change of venue, or if the OLLI program has to make a change. Your class(es) will still proceed at the scheduled times and dates.

## This Course is Being Recorded: Please Take Note of the Following Reminders

This fall quarter, our members will have the opportunity to select from **24 courses, either in-person or online**. Most of our classes will be recorded for your convenience and later viewing.

The microphones and camera are very sensitive. As a result, please observe the following:

1. In order not to disrupt the line of sight for the camera, please enter by the farthest door in Guadalupe Hall to the classroom (150) so you will not be walking across the room.
2. If you have a cold or are coughing, please wear a mask as the related sniffing, coughing and throat clearing make it difficult to hear the instructor clearly on the recording. Or please consider staying home to listen to the recording as a courtesy to your classmates.
3. As we do not control when the recording starts or stops, please be aware that your private conversations are picked up by the microphone and can be heard on the recording, including conversations at the podium and in the classroom during the break and for awhile after the end of the session. In other words, please take your conversations to the hallway.

**HYBRID COURSES:** Instructor will teach in-person; you can either come to campus or stream the course online via Zoom.

**RECORDED COURSES:** All summer classes will be recorded for later viewing, except where noted. Recordings will be sent via email usually within 24-48 hours after class has ended. If you are unable to attend a class, consider registering for classes that are recorded for later viewing.

# FALL 2024 COURSE OFFERINGS

All classes are recorded, except for those marked with an \*\*

## ***In-Person Courses***

U.S. Supreme Court: Recent and Current Cases and Controversies with <i>Margaret M. Russell</i>	5
American Musical Theatre, Part III: Broadway, 1970–Present with <i>John Kendall Bailey</i>	5
The Vietnamese Experience in America with <i>Hien Duc Do</i>	6
Documentary Film and Truth with <i>Michael Whalen*</i>	6
American Presidential Elections: A Consequential History with <i>Robert M. Senkewicz</i>	7
Shakespeare’s <i>Twelfth Night</i> : A Comedy of Emotions with <i>Maura M. Tarnoff</i>	7
San Francisco 49ers History: From Kezar Stadium to Candlestick Park to Levi’s Stadium with <i>Mark Purdy</i>	8
Behind the Scenes at <i>Twelfth Night</i> : A Comedy of Love and Mistaken Identity with <i>Jeffrey Bracco*</i>	8
Quantum Mechanics: Unlocking the Science of the Small Through History, Concepts and Applications with <i>Awanish Mishra</i>	9
Violence in the Public Square: The American Experience, Early Colonial through the Gilded Age with <i>Michele Bertolone</i>	9
Germany from 1945–Present: Division, Reunification, and Facing the Past with <i>Greg Tomlinson</i>	10
Global Populism with <i>Shawn Nichols</i>	10
World-Class Art in Your Own Backyard: Stanford University’s Cantor Arts Center, Anderson Collection and Public Art Rediscovered with <i>Diane Levinson*</i>	11
The Tragic Hero: How Sophocles Set the stage for Othello, Willy Loman and Walter White with <i>Barbara Clayton</i>	11
The Invention of Silicon Valley: The Genesis, the Players, the Global Impact and the Future with <i>Bebo White</i>	12
AI for Everyone: Unlocking the World of Generative AI Tools, Ethics, and Deepfakes with <i>Andrew Carlos and Anna Yang*</i>	12
Walking Tour of the Rodin Sculpture Garden and Public Art Surrounding the Cantor Arts Center with <i>Diane Levinson*</i>	13
The Protean Challenge of Regulating Artificial Intelligence with <i>Irina Raicu</i>	13
The “Christmas Truce”: SCU’s Holiday Concert Review with <i>Scot Hanna-Weir*</i>	14

## ***Online Courses***

<i>The Wizard of Oz</i> and the 1896 Election with <i>Terry McAteer</i>	14
Cheese: Milk’s Leap Toward Immortality: A Deep and Tasty Dive Into One of the World’s Most Beloved Food Groups with <i>Janet Fletcher</i>	17
Understanding the Electoral College with <i>Terry McAteer</i>	17
The Contemporary Art World: What Makes It Tick? The Who, the Where, and the Why of an Elusive but Thriving, Multi-billion Dollar Scene with <i>Lance Fung</i>	18

## ***Hybrid Course***

The British Invasion: British Rock of the 1960s with <i>Richie Unterberger</i>	18
--	----



## IN-PERSON COURSES

### U.S. Supreme Court: Recent and Current Cases and Controversies

Tuesday, September 24, October 1, and 8

1:00 p.m. - 3:00 p.m.

Guadalupe Hall, Rooms 150 and 151

\$90

**THIS COURSE WILL BE RECORDED**



In the Federalist Papers No. 78 (1788), founding father Alexander Hamilton described the judiciary as the least dangerous branch of government since it controlled no armies and lacked spending power. In recent years, however, as the conservative-dominated U.S. Supreme Court has wrought radical changes in precedent and has suffered public criticism of its lack of transparency and accountability, increasing attention is being paid to the considerable power that the Court does wield. In November 2023, after much criticism of the unregulated conduct of individual Justices in receiving vast sums of money and other gifts, the Supreme Court adopted its own Code of Conduct for ethical judicial behavior. The Code, however, is entirely voluntary and self-regulating, and to date, efforts from the legislative branch to ensure the Court's ethical accountability have failed. This course consists of three sessions: 1) Review and analysis of the 2023 Supreme Court term (cases decided from late 2023 through summer 2024); 2) Cases accepted for review by the Court as of the date of the class session; and 3) Calls for Supreme Court reform -- for example, term limits, changes in Court size, ethical accountability -- and the likelihood of systemic change. For all three sessions, attention will be paid to the possible impact of the 2024 Presidential election and the recent history of Presidential appointments to the Supreme Court. This course covers new material and has minimal overlap with previous Supreme Court courses by the instructor.

**Margaret M. Russell** is a member of the Faculty of Law at Santa Clara University. In addition to her expertise at Santa Clara in constitutional law, racial justice, civil rights, and civil liberties, she is a frequent media commentator, op-ed contributor, and speaker locally and nationally on issues related to social justice and the U.S. Constitution. While on the Santa Clara tenured faculty, Margaret has also been a visiting scholar at Columbia University, a visiting professor at Northeastern University, and a Fulbright scholar in Tanzania. From 2017 to 2021, Margaret served as the Associate Provost for Diversity & Inclusion at Santa Clara University. The Silicon Valley Business Journal named Margaret one of Silicon Valley's 100 Women of Influence for 2022. After receiving a degree from Princeton and before becoming a law professor, Margaret graduated from Stanford Law School, clerked for a federal judge in Madison, Wisconsin, and worked for a public interest law in San Francisco. She is a co-founder of two nonprofits, the East Palo Alto Community Law Project and the Equal Justice Society, and an elected member of the American Law Institute. Her past and present board service includes the National American Civil Liberties Union, the American Constitution Society Advisory Council, Equal Rights Advocates, the Oakland Museum, the Museum of the African Diaspora Advisory Council, and the Tenpyozan Buddhist Monastery.

### American Musical Theatre, Part III: Broadway, 1970–Present

Wednesday, September 25, October 2, 9, 16, and 23

10:30 a.m. - 12:30 p.m.

Guadalupe Hall, Rooms 150 and 151

\$140

**THIS COURSE WILL BE RECORDED**



The third and final chapter in this survey of American Musical Theater begins with an in-depth look at musicals from the 1970s and '80s, with special emphasis on superstar composers Stephen Sondheim (*Sweeney Todd*, *Into the Woods*), Andrew Lloyd Webber (*Evita*, *Cats*) and Stephen Schwartz (*Wicked*, *Godspell*, *Pippin*), epic productions like *Phantom of the Opera* and *Les Misérables*, and the connection with and influence of London's West End theatre. Then on to the '90s and the rise of popular Disney musicals (*The Lion King*) and the groundbreaking *Rent*. We'll cover the last few decades where waning popularity led to interesting ways that the genre has attempted to bring in new audiences, including a look at two enduring trends: musicals based on hit movies (*Hairspray*, *Billy Elliott*), and "jukebox" musicals that take pre-existing popular songs and fit them into a plot, often focusing on one artist or band (*Abba* and *Mamma Mia*, *Cher*, *Tina Turner*). Finally, we'll see the recent reinvention of the genre with shows like *The Book of Mormon* and *Hamilton*, and shows and creative teams that have been popular since then, like Pasek and Paul (*Dear Evan Hansen*, *La La Land*, *The Greatest Showman*), Jeanine Tesori (*Fun Home*, *Thoroughly Modern Millie*, *Kimberly Akimbo*), and more. This survey stands alone, whether or not you took Parts I and II.

**John Kendall Bailey** is a Bay Area conductor, lecturer, singer, and composer. He is the music director of the Mozart to Mendelssohn Orchestra and Mesopotamia Symphony and has guest-conducted numerous other groups. He has been a pre-concert lecturer for the San Francisco Opera and Oakland Symphony and frequently teaches courses through Cal State East Bay's OLLI program. John has taught a series of classes on Russian Composers and Nordic Composers, as well as on American Classical Music, 19th Century Romantic Pianist-Composers, and 19th Century French Composers. His courses are filled with video clips of concert performances. This is his 12th course for OLLI@SCU.

## The Vietnamese Experience in America

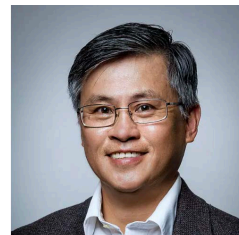
Monday, September 30 and October 7

1:00 p.m. - 3:00 p.m.

Guadalupe Hall, Rooms 150 and 151

\$60

**THIS COURSE WILL BE RECORDED**



Courses on the Vietnam War often concentrate on the American perspective and, therefore, often overlook the experience of the Vietnamese people. After the Fall of Saigon in April 1975, there was a large influx of Vietnamese refugees into the United States. As a result, the experience of the Vietnamese refugees provides an excellent vantage point from which to view the dynamics of American society's larger social, political, and economic relations. First, we'll look at the historical experiences of Vietnamese refugees. Second, we will evaluate the social, political, and economic processes by which a new immigrant group is incorporated into American society. We will examine topics such as the status of refugees versus immigrants, residential segregation, adjustments to a new country, social and economic adaptations, community formation and development, the youth "gang" problems, and the stereotypes of the mass media. By looking at these topics, we will not simply study the experience of Vietnamese refugees from their exodus after the Vietnam War to their resettlement in America. We will also examine the larger historical, social, political, and economic processes at work.

**Hien Duc Do** is a professor of Sociology and Interdisciplinary Social Sciences at SJSU. He received his Ph.D. in Sociology from the University of California, Santa Barbara. His primary research interests include Vietnamese American communities, race relations, the development of Asian American communities, and the impact of religion on immigration. He is the author of *The Vietnamese Americans* (Greenwood Press, 1999), *Religion at the Corner of Bliss and Nirvana: Politics, Identity and Faith in New Migrant Communities* (Duke University Press 2009), and numerous articles. He was an associate producer of "Viet Nam: At the Crossroads" (PBS, 1994). He is the past president of the Association of Asian American Studies (2000-2002). Hien is often sought after for interviews by national newspapers and television stations. This is his first course for OLLI@SCU.

---

## Documentary Film and Truth

Wednesday, October 2, 9, 16, 23, and 30

1:00 p.m. - 3:00 p.m.

Guadalupe Hall, Rooms 150 and 151

\$140

**THIS COURSE WILL NOT BE RECORDED**



Documentary filmmaking gives us a unique opportunity to examine the concept of truth. We will explore various documentary styles, techniques, and ethical considerations while critically analyzing how truth is represented and constructed in non-fiction filmmaking. We will watch a weekly documentary and discuss issues like truth and subjectivity, truth and advocacy, and documentary as witnesses. Discussions will include how the film was made and how it is connected to the topic covered. This is not a course to discuss the issues raised in the films but a cinema course to explore how documentary films cover issues. Scheduled films are *Nanook of the North*, *A Thin Blue Line*, *Bowling for Columbine*, *Exit Through the Gift Shop*, and *Stories We Tell*.

**Michael Whalen** is the Knight Ridder/Mercury News Endowed Professor of Communication and Chair of the Communication Department at Santa Clara University. He has taught film and television history at Santa Clara University for over 20 years and has produced documentaries and television shows since 1994. His television experience includes writing, producing, and directing for PBS, ESPN, Fox Television, MTV, NBC, and The Learning Channel (TLC). His independent film credits include *FRESH women*, *A Question of Habit*, *Gringos at the Gate*, and *The Farmer & The Chef*. He previously taught a course on Norman Lear for OLLI@SCU in Summer 2024.

## American Presidential Elections: A Consequential History

Tuesday, October 8, 15, and 22

10:00 a.m. - 12:00 p.m.

Guadalupe Hall, Rooms 150 and 151

\$90

**THIS COURSE WILL BE RECORDED**



The upcoming presidential election and the previous two appear in some ways to be very untypical. Many of us remember the violence and disorder that accompanied aspects of the 1968 election cycle, but when January 20, 1969, rolled around, things appeared quickly to return to normal. We seemed to return to the cycles of rotating party dominance that characterized much of the history of the American presidency: Nixon, Reagan, Bush, Clinton, Bush II, and Obama. This type of cycle would have been familiar to earlier generations of Americans, who remembered Hoover, then FDR, then Ike, then JFK, and LBJ. Yet these seemingly stable sets of rotations can mask more profound issues that throw light on the present. The fact that everyone at the 1787 Constitutional Convention expected that George Washington would be the first president if the convention were ratified meant that many aspects of the executive branch, including the method of choosing the president, were less discussed than many other things. Indeed, the election system that the Constitution set up lasted only until 1800, when something that the framers had not anticipated—the existence of organized political parties—caused controversy. The real story of American presidential elections is how these political parties tried to operate under a Constitution that did not anticipate their existence. In this course, we will look at that story through the experiences of people as diverse as Aaron Burr, Abraham Lincoln, Victoria Woodhull, William Jennings Bryan, and many others.

**Robert M. Senkewicz** was born in New York City. After attending graduate school at Stanford University, he became a history professor at Santa Clara University in 1976 and is now a Professor Emeritus. He taught courses in early American history, concentrating on the colonial, revolutionary, and early national periods. He also teaches courses on the history of California, the American Southwest, the Civil War, and a course in historical writing. In getting ready to teach a class about civil rights since 1964, he saw the need for a broader approach linking that history with our current issues. This will be his 24th history class for OLLI@SCU.

## Shakespeare's *Twelfth Night*: A Comedy of Emotions

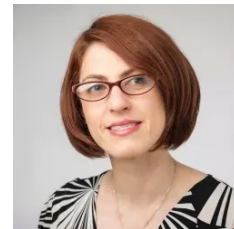
Thursday, October 10, 17, and 24

10:00 a.m. - 12:00 p.m.

Guadalupe Hall, Rooms 150 and 151

\$90

**THIS COURSE WILL BE RECORDED**



Get ready to dive into Shakespearean comedy with an in-depth exploration of the play *Twelfth Night*. Written during the same period as *Hamlet*, *Twelfth Night* grapples with complex themes and emotions, including grief, jealousy, unrequited love, and ambition, all intertwined with subversive humor. Together, we will examine Shakespeare's use of twin plots and disguises in connection with powerful explorations of Renaissance ideas of love, art, sexuality, and identity. This course provides a unique opportunity to study writing, directing, and performance for anyone interested in deepening their understanding and appreciation of Shakespeare's language and dramatic art. As Santa Clara University will be putting on a production of *Twelfth Night* shortly after the course ends, this will be a unique opportunity to study the play and see it come to life. The course is also meant to complement the Behind the Scenes course with the play's director, which is scheduled for October 29. Both courses stand alone.

While OLLI students are not required to read the text before the class, the instructor believes you will get more from the course if you have read the play and recommends The Folger edition of Shakespeare's *Twelfth Night*, which is available for purchase in print (with notes) or in free online edition (without notes) from the Folger Shakespeare Library ([www.folger.edu](http://www.folger.edu)). While no prior study of Shakespeare or reading of the play is required to enjoy the course, you may want to read a summary of the plot widely available online.

**Maura M. Tarnoff** is an English professor at Santa Clara University, where she teaches courses in Shakespeare, engineering communications, and critical thinking and writing. Since 2018, she has been organizing trips for SCU students and faculty to San Quentin State Prison to participate in Shakespeare and social justice workshops with system-impacted individuals in the Shakespeare at San Quentin program. She last taught Shakespeare for OLLI@SCU in a Spring 2023 course on *Othello*.



## San Francisco 49ers History: From Kezar Stadium to Candlestick Park to Levi's Stadium

Thursday, October 10, 17, and 24

1:00 p.m. - 3:00 p.m.

Guadalupe Hall, Rooms 150 and 151

\$90

**THIS COURSE WILL BE RECORDED**



The San Francisco 49ers are the Bay Area's most popular professional sports team. Television ratings and game attendance prove it. But how did the 49ers get that way? It is a compelling saga involving unforgettable characters who ate raw meat, invented new offenses, sawed cars in half, created last-second miracles, and won five Super Bowls. Northern California likes to think it is too sophisticated and smart to get excited about something as gauche as sports entertainment involving grunting and sweating. But not when it comes to the 49ers. This class will examine why. It will cover every decade of the franchise's journey, from an idea spawned by two Santa Clara University freshmen in 1928 to a startup enterprise that joined the rogue All-American Football Conference in 1946 to today's iconic National Football League institution. We'll discuss the great games, great players, and great coaches -- as well as some that weren't so great, along with little-known facts about the above. We'll connect the dots through the team's various eras, from San Francisco's Kezar Stadium and Candlestick Park to Levi's Stadium, just five miles from where those Santa Clara University freshmen first dreamed of a Bay Area team. We'll also encourage dialogue from class attendees about the 49ers' connections to Bay Area life and culture, plus any relevant personal memories. Helmets and shoulder pads are not required.

**Mark Purdy** is a retired journalist who spent 43 years writing about high-profile sports events and 33 years as a *San Jose Mercury News* columnist. He covered 14 Olympics, 26 World Series, 32 Super Bowls, and over 350 NFL games. Between 1984 and 2017, he analyzed and critiqued the San Francisco 49ers while reporting on their practices and games. He has recently completed an illustrated timeline book about the team's history, which will be published in September by Reedy Press. Among his other awards, Purdy was named one of America's Top 10 sports columnists by The Associated Press Sports Editors on multiple occasions. *The Wall Street Journal* also honored him for writing one of America's top 10 sports columns. In 1990, Purdy and his *Mercury News* colleagues won the Pulitzer Prize in General News Reporting for their coverage of the 1989 Loma Prieta "World Series" earthquake. He is a 1974 graduate of Northwestern University and has taught classes at San Jose State and Santa Clara University as an adjunct faculty member. In 2021, Purdy became the first journalist inducted into the San Jose Sports Hall of Fame. To his knowledge, he is not related to current 49ers quarterback Brock Purdy but did serve as a mediocre backup quarterback for his Ohio high school team.

---

## Behind the Scenes at *Twelfth Night*: A Comedy of Love and Mistaken Identity

**Course:** Tuesday, October 29

1:00 p.m. - 3:00 p.m.

Fess Parker Studio Theatre | in Louis B. Mayer Theatre

**Performance:** Sunday, November 10 at 2:00 p.m.

Location: Louis B. Mayer Theatre

(You will get your ticket at the class session on October 29) Additional tickets are available at the box office.

\$65

**THIS COURSE WILL NOT BE RECORDED**



"What country, friend, is this?" asks the cross-dressing Viola as she journeys into *Illyria*, a 1970s Berlin nightclub, where colorful patrons shatter social norms nightly with the latest music, fashion, and fun. "If music be the food of love, play on!" urges club owner Orsino, in love with Olivia who refuses to see him, while her servant Malvolio is tricked into thinking she is madly in love with him. Unrequited passions, the search for identity, and the power of disruption collide in Shakespeare's most progressive comedy. Go behind the scenes with director Jeffrey Bracco to learn more about the SCU production and how directors, designers, and actors bring this exciting and spirited concept to life on the Mayer stage with an updated setting and time frame. Tickets for the matinee performance on November 10 will be handed out at the course on October 29. You may buy additional tickets or exchange them for a different performance at the box office any time after the class. Other performances are November 1, 2, 3, 7, 8, and 9.

**Jeffrey Bracco** is an actor, director, playwright, and theatre professor with a thirty-year professional career in the United States and Europe. Jeff has been at the helm of numerous professional productions, including his own play, *ShakesPod*, at the Edinburgh Fringe Festival. Locally, he directed *Stage Kiss*, *In the Heights*, *American Idiot*, *Spamalot*, *M. Butterfly*, and *Calendar Girls*, as well as the musical *NINE*, for which he was nominated as Best Director by the Bay Area Theatre Critics Circle. An alumnus of Santa Clara University Theatre and Dance Department, Jeff is proud to be on the faculty of his alma mater, where he teaches Directing, Acting, and Introduction to Performance Collaboration and has directed productions of *Into the Woods*, *Sister Act*, *The 25th Annual Putnam County Spelling Bee*, *Chicago*, *Measure for Measure* and *The Glass Menagerie*, among others. This is his eighth Behind the Scenes for OLLI@SCU.

## Quantum Mechanics: Unlocking the Science of the Small Through History, Concepts and Applications

Thursday, October 31, November 7, 14, and 21  
10:00 a.m. - 12:00 p.m.  
Guadalupe Hall, Rooms 150 and 151  
\$125

**THIS COURSE WILL BE RECORDED**



Modern technology relies increasingly on quantum mechanics for basic operations, which will only increase in the years to come. The time has come for us all to discover this fascinating world, where we unveil the mysteries of the universe at its smallest scale. This engaging course will take you on a journey through the history and development of quantum theory, highlighting its revolutionary impact on our understanding of the natural world. Key failures of classical mechanics, which ruled science for hundreds of years, led to the birth of quantum mechanics. You'll learn of the brilliant minds who shaped this field and uncover how quantum mechanics influences our daily lives, from smartphones to medical imaging to GPS navigation. Dive into mind-bending concepts like superposition, entanglement, tunneling, and wave-particle duality, and see how this elegant science underpins cutting-edge technologies. Each session is designed to be interactive and thought-provoking, blending historical context with real-world applications. Whether you have a background in science or are simply curious about the universe, this course is for you. No mathematics or science background is required to appreciate and enjoy this course fully. Join us and better appreciate the secrets of the sub-atomic universe!

**Awanish Mishra** has more than forty years of science and business experience. Before entering the high-tech industry, he spent several years in nuclear chemistry/physics research. He holds a B.S. degree in Chemistry with a minor in Quantum Physics and an M.S. degree in Physical Chemistry with a focus on quantum mechanical modeling. He is now retired and studies astrophysics. He is an amateur astronomer who also enjoys astrophotography. His interests include studying quantum mechanics and stellar life cycles. He is passionate about astronomy, astrophysics, quantum mechanics, and Einstein's Theories of Relativity. He spends much of his free time studying and sharing his passion for science, which he strongly believes anyone can enjoy at any level. He has previously taught courses for OLLI@SCU on the Sun, the Moon, the planets, black holes, and other topics.

## Violence in the Public Square: The American Experience, Early Colonial through the Gilded Age

Thursday, October 31, November 7, 14, 21, and December 5 (No class on November 28)  
1:00 p.m. - 3:00 p.m.  
Guadalupe Hall, Rooms 150 and 151  
\$140

**THIS COURSE WILL BE RECORDED**



On May 22, 1856, on the floor of the U.S. Senate chamber, Senator Charles Sumner was almost fatally beaten by Representative Preston Brooks in retaliation for a speech Sumner delivered two days earlier. This event reminds us that the U.S., like other countries, has experienced periods where people inside and outside the political system took violent actions to make a point – economic, electoral, religious, racial, ethnic, or other. This survey class includes examples of events during five U.S. eras – early colonial; Revolution/Early Republic; Western Expansion; Civil War and Reconstruction; and the Gilded Age.

**Michele Bertolone** earned a master's degree in history from San José State University, with an emphasis in U.S. History since 1865. She has a particular interest in California social movements and has conducted original research on 20th Century San José. She currently teaches in the Humanities Department at San José State University and in the History Department at De Anza College. An engaging storyteller, she strives to bring humor and contemporary connections to events of the past. This is her second course for OLLI@SCU.



## Germany from 1945–Present: Division, Reunification, and Facing the Past

Friday, November 1, 8, 15, 22, December 6, and 13 (No class on November 29)

10:00 a.m. - 12:00 p.m.

Guadalupe Hall, Rooms 150 and 151

\$155

**THIS COURSE WILL BE RECORDED**



As we look at German history from the end of the Second World War to the present, some of the critical themes that emerge are ideological loyalties and divisions, multiculturalism, globalization, and the fragmented, incomplete multigenerational evasion and examination of Germany's Nazi past. Beginning with the origins of two parallel German nation-states and societies that emerged from the ruins of a devastated Germany, we will discuss a Western, democratic Federal German Republic and a socialist, Soviet-aligned German Democratic Republic. East and West German societies reflected key trends of the immediate post-Second World War landscape and deeper historical fissures in German history. Germans forged two distinct societies that were supported and opposed by their citizens in equal measures. We conclude with a survey of contemporary issues in German society viewed through a historical lens. Reunification brought many underlying tensions to the fore, making resolution and reintegration a difficult, expensive, and incomplete process. The travails of the Eurozone debt crisis challenged Germany's prominent place in global economic and diplomatic affairs. The massive intake of political, economic, and climate refugees raised searching questions about whether Germany's examination of racism and genocidal war was sincere or cursory. The ongoing Russo-Ukrainian War presented a historic turning point where Germans could no longer retreat from defensive alliances or shirk strategic commitments, which Chancellor Olaf Scholz dubbed die Zeitenwende. Finally, the War in Gaza challenged German policymakers and scholars to remain invested in Holocaust education while making sincere commitments to upholding international humanitarian law. These recent developments, placed in a German context, pose vexing problems for scholars and politicians alike. While this course follows the history of the Winter 2024 course on the Third Reich, it stands alone, and there will be some brief overlap to connect the dots.

**Greg Tomlinson** is a lecturer at San Jose State University. He is a specialist in modern German history and received his Ph.D. from Louisiana State University (LSU) in 2020. He has previously taught courses on modern German history, the Second World War, Jewish history, and classes on the Third Reich and Napoleon Bonaparte for OLLI's Lagniappe Chapter in southeastern Louisiana. This is Greg's second course for OLLI@SCU, following a course on the Third Reich, taught in Winter of 2024.

## Global Populism

Tuesday, November 5, 12, and 19

10:00 a.m. - 12:00 p.m.

Guadalupe Hall, Rooms 150 and 151\$

\$90

**THIS COURSE WILL BE RECORDED**



From the election of Viktor Orban in Hungary to Trump in the United States and the recent election of Javier Milei in Argentina, a brief news survey alerts even the most casual observer of the spread of populist sentiment worldwide. Such populists have, arguably, catalyzed the insecurities generated by the economic restructuring of the late 20th century, rising to power on platforms rejecting immigration, multiculturalism, and the system of Liberal Internationalism constructed after World War II. In so doing, they have appealed to fears of the "other" and proposed solutions that threaten the security of minority groups, undermine democratic processes, and, ultimately, serve to exacerbate social instability, domestically and globally. This course will examine the rise of populist leaders worldwide, what happens when populists take power, and the impacts of populism on global politics.

**Shawn Nichols** is a professor in the Department of Politics at the University of California, Santa Cruz, where she teaches a wide range of courses, including Global Politics, International Political Economy, International Law, Human Rights, and International Security. Her research interests are rooted in critical political economy, focusing on the accumulation strategies developed in moments of capitalist crisis. Specifically, her work contributes to debates in the global capitalism school around the emergence of a dominant transnational capitalist class - and its historically specific accumulation strategies in the ongoing class struggle around property rights. Selected publications include "Expanding Property Rights under Investor-State Dispute Settlement (ISDS): Class Struggle in the Era of Transnational Capital" and "Transnational Capital and the Transformation of the State: Investor-State Dispute Settlement (ISDS) in the Transatlantic Trade and Investment Partnership (TTIP)." This is her first course for OLLI@SCU.

## World-Class Art in Your Own Backyard: Stanford University's Cantor Arts Center, Anderson Collection and Public Art Rediscovered

Wednesday, November 6, 13, and 20  
10:00 a.m. - 12:00 p.m.  
Guadalupe Hall, Rooms 150 and 151  
\$90



**THIS COURSE WILL NOT BE RECORDED**

If you're looking for world-class art collections, look no further than Palo Alto. We'll explore three local collections on Stanford University's campus: the art of the Cantor Arts Center, the Anderson Collection, and public art on campus. Private families founded both museums and have assembled extraordinary collections. We will look at highlights from both collections while considering the impetus and differing approaches each took in building, maintaining, and educating the public about their respective collections. The Cantor Arts Center could be known as a "collection of collections." Founders Leland and Jane Stanford were dedicated to building an outstanding collection. It was renamed in 1999 for Iris and Gerald Cantor, and the Cantor Arts Center today houses art that spans 5,000 years and includes more than 38,000 works from around the globe. Harry W. and Mary Margaret Anderson have assembled one of the most extraordinary private collections of twentieth-century art. The collection combines East and West Coast, including Mark Rothko, Frank Stella, Jackson Pollock, Martin Puryear, and Clyfford Still, emphasizing Bay Area artists Richard Diebenkorn, Robert Arneson, and David Park. In addition to the two museums, we'll take a virtual grand tour of the outdoor public art that permeates the Stanford campus, highlighting some familiar favorites by Alexander Calder, Mark Di Suvero, George Segal, and Auguste Rodin, to name a few. Additionally, we'll explore several of the newer works installed within the last few years by Beverly Pepper, Xu Zeng, Alicja Kwade, and Deborah Kass.

**Diane Levinson** is an artist, art instructor, and arts advocate. Levinson received her B.A. in Sculpture from the State University of New York at Binghamton and her M.F.A. from San Jose State University. She has taught art and art history at DeAnza College, City College of San Jose, Monterey Peninsula College, Santa Clara University, and Bellarmine College Preparatory. Since retiring from full-time teaching, Levinson has offered Art History classes for Osher/OLLI at Santa Clara University, California State University at Monterey Bay, California State University at East Bay, and San Francisco State University.

---

## The Tragic Hero: How Sophocles Set the Stage for Othello, Willy Loman, and Walter White

Wednesday, November 6, 13, 20, December 4, and 11 (No class on November 27)  
1:00 p.m. - 3:00 p.m.  
Guadalupe Hall, Rooms 150 and 151  
\$140



**THIS COURSE WILL BE RECORDED**

When Aristotle wanted to develop a theory about what makes a tragic hero, he turned to Sophocles. Indeed, Sophocles can be said to have invented the tragic hero. Sophocles' tragic heroes are unflinchingly independent and uncompromising. They are also agonizingly alone. It is their strong-willed personality that leads to their tragic self-destruction because they must be true to themselves at any cost. In this course, we will read five plays by Sophocles: *Antigone*, *Oedipus the King*, *Ajax*, *Electra*, and *Philoctetes*. In each play, we will encounter a magnificent example of the Sophoclean hero. As we work through them, we will identify patterns and similarities that allow us to understand what constitutes a tragic hero, i.e., how the character's heroic qualities are themselves responsible for their tragedy. By the end of our course, it will be very clear that Shakespeare's Othello, Arthur Miller's Willy Loman, and Walter White of TV's *Breaking Bad*, among other tragic heroes, could not have existed without Sophocles.

**Barbara Clayton** received her B.A. from Oberlin College, an M.A. from Princeton in French, and a Ph.D. in Classics from Stanford University. She has taught Classics at Oberlin College, Santa Clara University, and Stanford, where she was a lecturer in a freshman humanities program for many years. She has been teaching at Stanford's Continuing Studies program since 2000. She has also been a faculty leader for several Stanford Alumni Travel/Study trips to Greece. Clayton is the author of *A Penelopean Poetics: Reweaving the Feminine in Homer's Odyssey*. She has written on topics that include Aristotle's biological writings, the Roman Poet Lucretius, and The Argonautica of Apollonius of Rhodes. She has taught eleven courses for OLLI@SCU in person and on Zoom.

## The Invention of Silicon Valley: The Genesis, the Players, the Global Impact and the Future

Tuesday, November 12, 19, December 3, 10, and 17 (No class on November 26)

1:00 p.m. - 3:00 p.m.

Guadalupe Hall, Rooms 150 and 151

\$140

**THIS COURSE WILL BE RECORDED**



Around the world, Silicon Valley has become synonymous with the high technology that has shaped global society, fortunes won and lost, venture capitalism, and the charismatic freethinkers who inspire legend. But how did this stretch of California's Santa Clara Valley, which only 70 years ago was lined with family farms and orchards, evolve into how it is perceived today? We will trace the timeline of Silicon Valley's growth, the inspirations, successes, and failures, the landmarks along El Camino Real, and the characters that have defined and marked its growth. It's a story that begins with the birth of Stanford University, moves through the World War II and Cold War years, finds itself in the freewheeling '60s, explodes, collapses, and explodes again in the early days of the Internet and the World Wide Web and continues to shape 21st-century society and economy. We'll explore how Stanford became a hotspot for technological research and development, how the military and military funding influenced the Valley, why "silicon" was added to the Valley through the invention of the transistor, integrated circuits, and the growth of corporations like Intel, HP, Sun, and Silicon Graphics; and how the Valley became a global research center through organizations like Stanford Research Institute and Xerox PARC.

**Bebo White** is retired from the SLAC National Accelerator Laboratory, the U.S. national laboratory for high-energy physics and basic energy science at Stanford University. He has been in continual contact for 30 years with many of the technologies evolving in Silicon Valley and the companies that have developed and provided such technology. More recently, his teaching interests have involved the blending of history and science/technology using storytelling and scientific facts and details. He also holds faculty appointments at multiple academic institutions, is involved in several major conference series, and is a frequent conference and seminar speaker. He is the author (or co-author) of nine books, over 100 papers, and journal articles. He has taught for OLLI@SCU on topics such as Bitcoin, the Manhattan Project, and CERN.

---

## AI for Everyone: Unlocking the World of Generative AI Tools, Ethics, and Deepfakes

Tuesday, December 3 and Thursday, December 5

10:00 a.m. - 12:00 p.m.

Guadalupe Hall, Rooms 150 and 151

\$60

**THIS COURSE WILL NOT BE RECORDED**



Embark on a journey into the fascinating world of Artificial Intelligence (AI) in this two-part workshop series. Given both the potential benefits and risks of generative AI, educating ourselves about the basics of AI, AI tools, and ethical issues is urgent. The sessions will combine insightful demonstrations with hands-on practice, allowing participants to experience firsthand the capabilities of these AI tools. Through interactive exercises and guided discussions, attendees will gain a deeper understanding of various AI tools and build their confidence and conversational fluency around AI. This will also include a broad scan of ethical issues inherent in generative AI content, especially concerning misinformation and deepfakes. Attendees will develop skills to recognize and discern deepfakes from authentic media and discuss the ethical implications of creating and disseminating deepfakes. Feel free to bring your laptop or tablet to experience AI tools yourself.

**Andrew Carlos** (he/him/his) is the Head of Research, Outreach, and Inclusion at Santa Clara University Library. He works with the Communication and Political Science departments. His research interests include popular culture, information cultures, and inclusion. This is his first course for OLLI@SCU.

**Anna Yang** (she/her/hers) is the Science Librarian at Santa Clara University. In her current role, she liaisons with the biology, chemistry, environmental sciences, physics, and public health departments. Anna enjoys gamifying her instructions and making her research appointments impactful. When Anna is not in the library creating new instructional materials or learning more about the latest trends in libraries, she's busy balancing how to be a WoW gamer and a first-time mom. This is her first course for OLLI@SCU.



## Walking Tour of the Rodin Sculpture Garden and Public Art Surrounding the Cantor Arts Center

Wednesday, December 4

10:00 a.m. - 12:00 p.m.

Main Entrance to the Cantor Museum, Stanford Campus

\$30

**THIS COURSE WILL NOT BE RECORDED**



OLLI instructor Diane Levinson will guide members on a tour of some of Stanford's outdoor public art. Meet in front of the main entrance to the Cantor Museum for a guided tour of the many Rodin sculptures and the public art on the grounds around the museum. Artists whose work will be viewed include Beverly Pepper, Deborah Kass, Andy Goldsworthy, and Richard Serra, to name a few. You are responsible for your transportation.

Parking guidelines are available at <https://transportation.stanford.edu/how-purchase-visitor-parking>.

**Diane Levinson** is an artist, art instructor, and arts advocate. Levinson received her B.A. in Sculpture from the State University of New York at Binghamton and her M.F.A. from San Jose State University. She has taught art and art history at DeAnza College, City College of San Jose, Monterey Peninsula College, Santa Clara University, and Bellarmine College Preparatory. Since retiring from full-time teaching, Levinson has offered Art History classes for Osher/OLLI at Santa Clara University, California State University at Monterey Bay, California State University at East Bay, and San Francisco State University.

---

## The Protean Challenge of Regulating Artificial Intelligence

Wednesday, December 11

10:00 a.m. - 12:00 p.m.

Guadalupe Hall, Rooms 150 and 151

\$30

**THIS COURSE WILL BE RECORDED**



Norms, policies, and regulations around the development and use of Artificial Intelligence tools are increasing rapidly. This is happening worldwide, from China to the European Union and the United States, as well as in many other jurisdictions. However, the AI technologies themselves continue to change and evolve at a brisk rate. What is being done to regulate them? What should be done? We will discuss (and answer questions) related to the many attempts to manage these rapidly changing and momentous new technologies. From audio and video "deep fakes" to musical composition and coding aids, from the creation of text that is both helpful and harmful and, at times, heedless of intellectual property, the effects of the variety of types of AI on work, the economy, politics, science, education, healthcare, warfare, and much more will likely be, or already are, substantial. What roles do technologists, ethicists, lawyers, lawmakers, and all of us as citizens impacted by AI need to play in this process?

**Irina Raicu** directs the Internet Ethics program at the Markkula Center for Applied Ethics. She is a certified information privacy professional, and her work addresses a wide variety of topics—from online privacy to social media's impact on society, from the digital divide to the ethics of encryption, and the many ethical issues associated with artificial intelligence. Raicu was a member of the Partnership on AI's first working group on Fair, Transparent, and Accountable AI, and she served as a member of the initial cohort of the city of San Jose's privacy advisory task force. She has authored and co-authored a variety of resources published by the Markkula Center, including the compendium "Ethics in Technology Practice," and, together with other center staff, she has worked with multiple companies in the process of developing their responsible tech/responsible AI policies and processes. Her writing has appeared in publications including *The Atlantic*, *U.S.A. Today*, *Forbes*, *MarketWatch*, *Slate*, the *San Francisco Chronicle*, and *Recode*. She tweets at @IEthics and is the primary contributor to the blog Internet Ethics: Views from Silicon Valley. As a teenager, Raicu came to the U.S. with her family as a refugee; her background informed her interest in the Internet as a tool whose use has profound ethical implications worldwide. She holds a J.D. degree from Santa Clara University's School of Law, a bachelor's degree in English from U.C. Berkeley, and a master's degree in English and American Literature from San Jose State University. This is her first course for OLLI@SCU.

## The “Christmas Truce”: SCU’s Holiday Concert Review

**Course:** Thursday, December 12

1:30 p.m. - 3:30 p.m.

Guadalupe Hall, Rooms 150 and 151

**Performance:** Sunday, December 15 at 4:00 p.m.

Location: Mission Santa Clara

You will get your ticket at the class session, Thursday, December 12th)

\$65 (Deadline to register is Monday, December 9th)

**THIS COURSE WILL NOT BE RECORDED**

In December of 1914, German and English soldiers on the front lines of World War I set aside their weapons and took up carols in a historic impromptu truce. One hundred and ten years later, the SCU Chorale remembers this demonstration of humanity by singing carols and songs known to be sung at the event, interspersed with readings from contemporary soldiers’ letters and seasonal choral pieces. Beginning from the historical perspective, the class will explore what happened between the soldiers on the front line. We will examine soldiers’ letters and contemporary newspaper accounts of the events to understand how such an event unfolded and how the public and military leadership reacted. Additionally, Hanna-Weir will guide the class through his process of selecting the repertoire, assembling the program, and preparing the chorus for the event.

The course will include a ticket redeemable for Sunday, December 15 performance at the Mission Santa Clara.

**Scot Hanna-Weir** is an Associate Professor of Music, Director of Choral Activities, and Music Department Chair at Santa Clara University. He also has served as the Artistic Director of the Santa Clara Chorale since 2013. He is recognized for his innovative programming, fluency with technology in performance, and engagement with issues of equity and social justice. In addition to regularly commissioning and premiering new works, he is also an active composer and arranger. Scot holds a Doctor of Musical Arts in choral conducting from the University of Maryland, a Master of Music in choral conducting from the University of Wisconsin, and a Bachelor of Music in choral music education from the University of North Carolina at Greensboro. His major conducting teachers have included Matthew Halls, Helmuth Rilling, Edward Maclary, James Ross, Beverly Taylor, William Carroll, and Welborn Young. He has taught numerous courses for OLLI@SCU.



## ONLINE COURSES

### ***The Wizard of Oz and the 1896 Election***

Tuesday, October 1

10:00 a.m. - 12:00 p.m.

Online | via Zoom

\$30

**THIS COURSE WILL BE RECORDED**

It might surprise you to learn that Frank Baum's 1898 classic novel *The Wizard of Oz* is an allegory about the 1896 Presidential election, which pitted William McKinley against William Jennings Bryan. What are the real-life counterparts to the Tin Man, the Scarecrow, the Lion, the Wizard, and even the flying monkeys and the Yellow Brick Road? Be prepared to be blown away! As we head into the 2024 election, learn about the importance of one of the most consequential elections in American history.

**Terry McAteer** is the retired Nevada County Superintendent of Schools, having served in that office for 22 years. McAteer holds a doctorate in Educational Administration from the University of San Francisco and undergraduate degrees in political science, history, and journalism. He has spent many years in high school history and government classrooms, along with stints at the university and community college levels. Terry is active at the Sierra College OLLI Program, serving as Chair of the Advisory Council for five years. Terry is a native San Franciscan, and he and his wife, Liz, reside in Grass Valley, CA., and have two adult children who live in Northern California. This is his first course for OLLI@SCU.





Courses	Instructor	Date(s)	Time	Pg.
<b>MONDAYS</b>				
IN-PERSON ONLY: The Vietnamese Experience in America	Hien Duc Do	September 30 and October 7	1:00 p.m. - 3:00 p.m.	6
ONLINE ONLY: Understanding the Electoral College	Terry McAteer	October 21	1:00 p.m. - 3:00 p.m.	17
HYBRID: The British Invasion: British Rock of the 1960s	Richie Unterberger	November 4, 11, 18, December 2, and 9	10:00 a.m. - 12:30 p.m.	18
ONLINE ONLY: The Contemporary Art World: What Makes It Tick? The Who, the Where, and the Why Of An Elusive but Thriving, Multi-billion Dollar Scene	Lance Fung	December 2, 9, and 16	1:00 p.m. - 3:00 p.m.	18
<b>TUESDAYS</b>				
IN-PERSON ONLY: U.S. Supreme Court: Recent and Current Cases and Controversies	Margaret M. Russell	September 24, October 1, and 8	1:00 p.m. - 3:00 p.m.	5
ONLINE ONLY: <i>The Wizard of Oz</i> and the 1896 Election	Terry McAteer	October 1	10:00 a.m. - 12:00 p.m.	14
IN-PERSON ONLY: American Presidential Elections: A Consequential History	Robert Senkewicz	October 8, 15, and 22	10:00 a.m. - 12:00 p.m.	7
IN-PERSON ONLY: Behind the Scenes at <i>Twelfth Night</i> : A Comedy of Love and Mistaken Identity	Jeffrey Bracco	October 29	1:00 p.m. - 3:00 p.m.	8
IN-PERSON ONLY: Global Populism	Shawn Nichols	November 5, 12, and 19	10:00 a.m. - 12:00 p.m.	10
IN-PERSON ONLY: The Invention of Silicon Valley: The Genesis, the Players, the Global Impact and the Future	Bebo White	November 12, 19, December 3, 10, and 17	1:00 p.m. - 3:00 p.m.	12
IN-PERSON ONLY: AI for Everyone: Unlocking the World of Generative AI Tools, Ethics, and Deepfakes	Andrew Carlos and Anna Yang	December 3 and December 5	10:00 a.m. - 12:00 p.m.	12
<b>WEDNESDAYS</b>				
IN-PERSON ONLY: American Musical Theatre, Part III: Broadway, 1970–Present	John Kendall Bailey	September 25, October 2, 9, 16, and 23	10:30 a.m. - 12:30 p.m.	5
IN-PERSON ONLY: Documentary Film and Truth	Michael Whalen	October 2, 9, 16, 23, and 30	1:00 p.m. - 3:00 p.m.	6

## OSHER FALL 2024 COURSES

Courses	Instructor	Date(s)	Time	Pg.
<b>WEDNESDAYS CONTINUED</b>				
IN-PERSON ONLY: World-Class Art in Your Own Backyard: Stanford University's Cantor Arts Center, Anderson Collection and Public Art Rediscovered	Diane Levinson	November 6, 13, and 20	10:00 a.m. - 12:00 p.m.	11
IN-PERSON ONLY: The Tragic Hero: How Sophocles set the stage for Othello, Willy Loman and Walter White	Barbara Clayton	November 6, 13, 20, December 4, and 11	1:00 p.m. - 3:00 p.m.	11
IN-PERSON ONLY: Walking Tour of the Rodin Sculpture Garden and Public Art Surrounding the Cantor Arts Center	Diane Levinson	December 4	10:00 a.m. - 12:00 p.m.	13
IN-PERSON ONLY: The Protean Challenge of Regulating Artificial Intelligence	Irina Raicu	December 11	10:00 a.m. - 12:00 p.m.	13
<b>THURSDAYS</b>				
IN-PERSON ONLY: Shakespeare's <i>Twelfth Night</i> : A Comedy of Emotions	Maura M. Tarnoff	October 10, 17, and 24	10:00 a.m. - 12:00 p.m.	7
IN-PERSON ONLY: San Francisco 49ers History: From Kezar Stadium to Candlestick Park to Levi's Stadium	Mark Purdy	October 10, 17, and 24	1:00 p.m. - 3:00 p.m.	8
IN-PERSON ONLY: Quantum Mechanics: Unlocking the Science of the Small Through History, Concepts and Applications	Awanish Mishra	October 31, November 7, 14, and 21	10:00 a.m. - 12:00 p.m.	9
IN-PERSON ONLY: Violence in the Public Square: The American Experience, Early Colonial through the Gilded Age	Michele Bertolone	October 31, November 7, 14, 21, and December 5	1:00 p.m. - 3:00 p.m.	9
IN-PERSON ONLY: AI for Everyone: Unlocking the World of Generative AI Tools, Ethics, and Deepfakes	Andrew Carlos and Anna Yang	December 3 and December 5	10:00 a.m. - 12:00 p.m.	12
IN-PERSON ONLY: The "Christmas Truce": SCU's Holiday Concert Review	Scot Hanna-Weir	December 12	1:30 p.m. - 3:30 p.m.	14
<b>FRIDAYS</b>				
ONLINE ONLY: Cheese: Milk's Leap Toward Immortality: A Deep and Tasty Dive Into One of the World's Most Beloved Food Groups	Janet Fletcher	October 4, 11, 18, and 25	10:00 a.m. - 12:00 p.m.	17
IN-PERSON ONLY: Germany from 1945–Present: Division, Reunification, and Facing the Past	Greg Tomlinson	November 1, 8, 15, 22, December 6, and 13	10:00 a.m. - 12:00 p.m.	10

## Cheese: Milk's Leap Toward Immortality: A Deep and Tasty Dive Into One of the World's Most Beloved Food Groups

Friday, October 4, 11, 18, and 25

10:00 a.m. - 12:00 p.m.

Online | via Zoom

\$125

**THIS COURSE WILL BE RECORDED**



Where does cheese come from, and how are its hundreds of varieties made worldwide? What gives each cheese its unique texture and taste? How does the feeding of the cow or sheep play a role in the cheese? In this course, explore the development of cheesemaking through history (including its bit part in Homer's *Odyssey*) and how the major styles evolved. Your instructor will guide you through the cheesemaking process for soft cheeses like Brie and Camembert and hard cheeses like Parmigiano Reggiano and Cheddar and explain how different types emerged in different regions. Learn about curds, whey, rennet, and culture as you follow cheese from the milking parlor to the ripening and aging process. Lastly, become a smarter shopper and learn to evaluate cheese like a pro in a lesson devoted to sensory appreciation. Each of the four Zoom-based classes will include a guided tasting component; the instructor will provide a list of recommended cheeses to purchase for that purpose.

**Janet Fletcher** is the author or co-author of more than 30 books on food and beverage, including *Cheese & Beer*, *Cheese & Wine*, *The Cheese Course*, and the Audible lecture series *Cultured: The Epic Story of Cheese*. Janet publishes the weekly *Planet Cheese* blog and is the longtime cheese columnist for *Specialty Food* magazine. Trained at the Culinary Institute of America and at Chez Panisse, Janet has taught cheese appreciation classes to thousands of cheese enthusiasts nationwide, both in person and virtually. Janet, a former staff food writer for the *San Francisco Chronicle*, received three James Beard Awards and the IACP Bert Greene Award for her journalism. Her food writing has appeared in numerous national publications, including *The New York Times*, *Saveur*, *Fine Cooking*, and *Food & Wine*. Janet is a Phi Beta Kappa graduate of Stanford University with a B.A. in economics. She is a member of the American Cheese Society, Les Dames d'Escoffier and the invitation-only *Guilde Internationale des Fromagers*. Janet resides with her husband in Napa Valley. ([www.janetfletcher.com](http://www.janetfletcher.com)). This is her first course for OLLI@SCU.

---

## Understanding the Electoral College

Monday, October 21

1:00 p.m. - 3:00 p.m.

Online | Via Zoom

\$30

**THIS COURSE WILL BE RECORDED**



The Electoral College is a baffling, semi-mysterious portion of the Constitution that defines our Presidential election system. We'll discover why our Founding Fathers devised this unique process and the history behind some interesting Presidential elections, similar to 2020, where the Electoral College became the centerpiece of the election. Furthermore, besides understanding how the Electoral College works, we will create a variety of Electoral College scenarios of how the 2024 election might play out since the readjustments following the 2020 census.

**Terry McAteer** is the retired Nevada County Superintendent of Schools, having served in that office for 22 years. McAteer holds a doctorate in Educational Administration from the University of San Francisco and undergraduate degrees in political science, history, and journalism. He has spent many years in high school history and government classrooms, along with stints at the university and community college levels. Terry is active at the Sierra College OLLI Program, serving as Chair of the Advisory Council for five years. Terry is a native San Franciscan, and he and his wife, Liz, reside in Grass Valley, CA., and have two adult children who live in Northern California. This is his first course for OLLI@SCU.

## The Contemporary Art World: What Makes It Tick? The Who, the Where, and the Why Of An Elusive but Thriving, Multi-billion Dollar Scene

Monday, December 2, 9, and 16

1:00 p.m. - 3:00 p.m.

Online | via Zoom

\$90

**THIS COURSE WILL BE RECORDED**



Welcome to the fascinating sphere known as "The Art World," not just the realm of artists but an industry that generated more than \$150 billion in economic activity last year. What makes it tick? We will examine the who, the where, and the why: the players—artists, curators, directors, patrons, and collectors; the places—commercial galleries, non-profit spaces such as museums and private foundations, auction houses, biennials, and artist residencies; and the motivators—passion, greed, business interests, and the support of artists and art-making. We will begin with an introduction to the "players" by discussing the myriad of roles people play in the Art World. There are artists, of course, but there are also curators, directors, patrons, and collectors without whom those artists would remain unknown. Stories of iconic personalities can help to illustrate how a unique, if not crazy, community exists and thrives. Your instructor will bring his over thirty years of ongoing experience in the NY, Bay Area, and international art scenes into insightful, direct, and humorous glimpses of how this world works. Then, we will concentrate on the various types of art establishments, such as commercial galleries, an assortment of non-profit spaces such as museums, auction houses, and biennials, and the different roles that each plays in developing fame and value. Finally, we will shed light on some of the motivations of those involved in the Art World. Passion and self-expression, the search for fame, investment for economic gain, and the altruistic support of art-making and communities play a role. This course may inspire you to participate in the local art scene and help you understand how you can be more engaged with it.

**Lance Fung** is the curator for Fung Collaboratives, an organization that conceives and realizes art exhibitions worldwide. Fung has primarily curated large-scale public art exhibitions for decades after closing his successful NYC gallery. Recently, Fung curated *Constellations: Global Reflections* as the first art exhibition for a G20 summit in 2022 in Bali, as well as *Illuminate Coral Gables*, a light and technology-based exhibition, which opened to the public as a sign of hope during the pandemic. He transformed vacant lots in both Washington D.C and Atlantic City into much-needed park systems through his art exhibitions *Nonuments* and *Artlantic*. With his unique curatorial eye, Fung has curated internationally recognized exhibitions such as *The Snow Show* in 2003, 2004, and 2006, and *Lucky Number Seven* (2008) for the seventh SITE Santa Fe International Biennial, Wonderland (2009-2010). Fung has created other important exhibitions for the Venice Biennale and the Venice Architectural Biennale and currently installs exhibitions in the Art Kiosk, Redwood City, CA. He is currently working on an exhibition for the World Water Forum and the G20 in Bali in 2024.

### HYBRID COURSE

## The British Invasion: British Rock of the 1960s

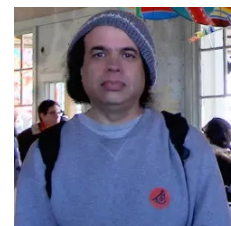
Monday, November 4, 11, 18, December 2, and 9 (No class on November 25)

10:00 a.m. - 12:30 p.m.

Guadalupe Hall, Rooms 150 and 151 or Online | Via Zoom

\$155

**THIS COURSE WILL BE RECORDED**



When the Beatles became UK superstars in 1963 and then massive in the U.S. and the rest of the world in 1964, they changed popular music and culture forever. They were immediately followed by literally dozens of acts from the British Isles that also did a great deal to transform rock and society globally with their music and lifestyle. These included the Rolling Stones, the Who, the Kinks, Pink Floyd, and the first bands of stars like Van Morrison (in Them), Jimmy Page (the Yardbirds), and Eric Clapton (the Yardbirds and Cream). Using both common and rare recordings and video clips, the course will trace the British Invasion, as this movement is known throughout the world, from the relatively simple Merseybeat of Liverpool in the early 1960s through the hard rock, psychedelia, and progressive art rock that British artists innovated as the 1960s progressed. Many of these artists also changed the world at large as well as the entertainment world, and the course will also examine their influence on American musicians and youth, how they changed the way music was recorded and marketed, and the huge social impact of their non-conformist approach to both art and life on the burgeoning 1960s youth counterculture.

**Richie Unterberger** is the author of fourteen books on 1960s music, a teacher at the Fromm Institute of the University of San Francisco and the San Francisco Conservatory of Music, a lecturer on rock history at events around the U.S., and a prolific contributor to the All Music Guide, the largest on-line database of music biographies and album reviews, for which he has written thousands of entries; and numerous other music publications. Widely recognized as an authority on rock music, Unterberger has been interviewed in recent film documentaries on the Byrds, Tim Buckley, Frank Zappa & the Mothers of Invention, Neil Young, and the Doors and is the recipient of several awards, including a grant to conduct research at the Rock and Roll Hall of Fame, as part of the Gladys Krieble Delmas Visiting Scholar Program. Mr. Unterberger has taught numerous courses for OLLI@SCU, including ones on women in rock, the Beatles, the Rolling Stones, the folk-rock revolution, and Motown, as well as courses on Janice Joplin, Jimi Hendrix, and the Doors. His most recent book is *San Francisco: Portrait of a City* (Taschen, 2022).



## **WELCOME to the Osher Lifelong Learning Institute (OLLI) Fall Program 2024-25**

*Celebrating 21 Years on the Santa Clara University campus*

**TUESDAY, SEPTEMBER 10, 2024**

**10 a.m. to 12:00 p.m. in the Williman Room and patio area of the  
Benson Memorial Center**

### **MAKING CONNECTIONS**

With OLLI Members, Friends, & Course Instructors.

**This event is open to all members, friends, and guests!**

**Speakers will discuss the themes in the fall courses**

Instructor Michele Bertolone will teach a mini-course.

**Meet Curriculum Committee Members & SIG Leaders Raffle**

**Drawings - will be held throughout the morning. Check your  
email or [scu.edu/osher](https://scu.edu/osher) for further information about this  
event.**



## Bernard Osher Foundation

The Bernard Osher Foundation, headquartered in San Francisco, was founded in 1977 by respected businessman, philanthropist, and community leader Bernard Osher. The Foundation seeks to improve quality of life through innovative funding in higher education and the arts. The Foundation supports a national lifelong learning network of programs designed for adults; Osher Lifelong Learning Institutes operate on 120+ college and university campuses in all 50 states and the District of Columbia.



Bernard Osher

## National Resource Center

The National Resource Center for Osher Lifelong Learning Institutes (Osher NRC) is a non-governing center of excellence, hosted by Northwestern University, benefiting adults through the national network of 120+ Osher Lifelong Learning Institutes (OLLIs).

The mission of the Osher NRC is to help OLLIs thrive by connecting OLLIs to each other and to resources, collaborating with OLLIs and partner organizations, consulting with OLLI leaders to find solutions, and celebrating the successes, camaraderie, and growth of OLLIs and their members.



## About the Osher Institute at Santa Clara University

The Osher Lifelong Learning Institute at SCU is one of 123 unique Osher Lifelong Learning Institutes supported by The Bernard Osher Foundation. The Osher Institute at SCU is funded in part through the generous endowment support of The Bernard Osher Foundation, along with our member fees, class registrations, and contributions.

**Mission:** The Osher Lifelong Learning Institute at Santa Clara University is committed to providing opportunities for adult learners to engage in conversations with scholars, to enrich their intellectual, personal, and social lives and to enjoy the academic environment without the pressure of tests and grades.

**Vision:** The vision of the Osher Lifelong Learning Institute at Santa Clara University is to become one of the premier lifelong learning institutes in the South Bay, sustaining and growing our influence by offering the best selection of continuing education courses taught by exceptional instructors. We envision becoming a permanent and enduring Institute at Santa Clara University facilitating the engagement of the University with alumni and the greater Silicon Valley community.

**Objective:** The objective of the Osher Lifelong Learning Institute at Santa Clara University is to continue to be a self-supported Institute of the University that provides exciting and intellectually stimulating classes for our members and becomes recognized as a contributing resource to Santa Clara University and its students by making lifelong connections through learning.

## SPECIAL INTEREST GROUPS (SIGs)



**Want to improve your health while having fun?** At Osher we're committed to supporting Special Interest Groups or SIGs. Besides being good for your health, getting out and being part of a social group is just fun.

**What is a Special Interest Group or SIG?** A SIG is simply a group of OLLI members who meet for areas of personal interest.

**SIGs are a very popular benefit of membership.** They're a great way to make new friends and socialize with members with similar interests. There is no additional fee to join any of the SIGs, and attendance is always optional. Some groups meet regularly at the same time and place, while others get together for specific events.

**SIGs are defined and put together by members.** The OLLI office provides support by listing the SIGs and the SIG facilitator contact information in the OLLI E-Bulletin, and helping schedule rooms and ZOOM meetings, if necessary.

**Do you have an idea for a group you'd like to see formed?** Perhaps current events, mahjong, New Yorker or Atlantic discussions, or technology? Let us know.

**Want to propose a new SIG?** Information is available on the OLLI Home Page under the Special Interest Group tab.

OLLI@SCU

# SPECIAL INTEREST GROUPS

**ARTIFICIAL INTELLIGENCE**



**BREAKFAST CHAT**



**CONTEMPORARY ISSUES DISCUSSION**



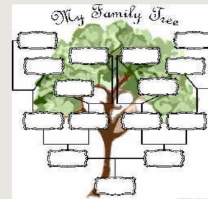
**CONVERSATIONAL SPANISH**



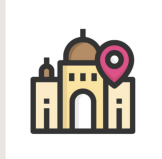
**GARDENING**



**GENEALOGY**



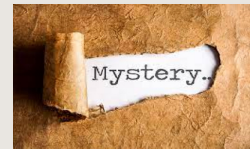
**LET'S EXPLORE OUR LOCAL HISTORY**



**LET'S PLAY BRIDGE**



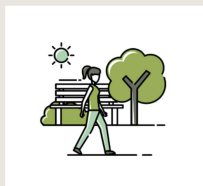
**MYSTERY BOOK CLUB**



**PHOTOGRAPHY**



**RAMBLING**



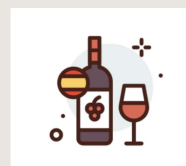
**OLLI READS**



**TIME OF OUR LIVES**



**WINE FUNDAMENTALS**



[scu.edu/osher/special-interest-group-sigs](https://scu.edu/osher/special-interest-group-sigs)

# COURSE REGISTRATION INSTRUCTIONS

## Join OLLI@SCU

1 Access the OLLI homepage at [scu.edu/osher](http://scu.edu/osher).

Click on the option to **Register for courses**

Join OLLI (membership is required to register for courses or events)

• Register for courses

2 Add your **first** and **last name ONLY** and then click Continue.

First Name \*

Jane

Last Name \*

Smith

Continue

3 Select your desired course(s)- select **Attend**

Monday, January 6, 2020

Attending

Start Time

End Time

Course Name

Attend

1:00 PM

Mon. 01/13 3:00 PM

Armchair Tr  
View of Life

4 Select **1** and then select **Next**  
Review your class list and then **Save**

OLLI Member  
(1 person[s] per ticket)  
You may select a maximum of 1.

\$50

1

OLLI Member Ticket 1 (\$50)

+ Add Attendee

Subtotal: \$50

+ Add Attendee

Next

Cancel

Back

Save

Scroll down to the bottom of the page and select **Continue**

5 Select **Checkout**

Event

[Armchair Traveler: An Insider's View of Life in Hungary](#)  
Mon. 1/6/2020  
1:00 PM - Mon. 01/13 3:00 PM

Attendee

Jane Smith

Event Options

N/A

\$50

Previous

Checkout

6 Enter your email address and then select **Continue**

Email \*

olliat SCU@gmail.com

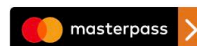
Previous

Continue

7 Select **Pay by Credit Card**

Pay by credit card

Or by wallet





## BEFORE YOU REGISTER FOR OLLI COURSES:

- Courses will be offered in three formats: ONLINE ONLY via Zoom, IN-PERSON ONLY, or as a HYBRID. In-person courses are subject to SCU policy guidelines and mandates.
- The SCU Development office requires two business days to ensure that your payments have been processed and your profile shows that you have successfully paid for a particular course.
- If you miss the two-day cut off, just send the OLLI office a copy of your email confirmation, showing payment has been made. If you registered for an ONLINE course, we will forward the email link that grants you access to your class session.

### IN-PERSON COURSES:

- Masks will no longer be required in classrooms, unless required by an instructor. Masks continue to be strongly encouraged in all indoor locations.
- Currently, any courses scheduled to be in-person can, at any time, be converted to a Zoom course if the program mandates appear before the scheduled dates or instructors have converted their course to be on Zoom.
- There will be no refunds for courses that are converted from in-person to Zoom. Your course will still proceed at the scheduled times and dates.

### ONLINE COURSES:

- You will receive an email from the OLLI office 24 hours before the start of your first class session. The link will grant you access to your course via Zoom. If you do not receive the email, please contact the OLLI office at [olli@scu.edu](mailto:olli@scu.edu) and will assist you.
- We strongly recommend that you do a trial run via Zoom prior to registering for a course so that you are familiar with it before the course begins. Our refund policy has NOT changed. Refunds are processed ONLY if you have a life-changing event that prevents you from participating in your online course.

### HYBRID COURSES:

- A hybrid course gives students the option to attend in-person or online via Zoom, complementing your learning experience.
- You will receive an email from the OLLI office 24 hours before the start of your first class session. The link will grant you access to your course via Zoom, if you choose to attend online. If you do not receive the email, please contact the OLLI office at [olli@scu.edu](mailto:olli@scu.edu) and we will assist you.
- If you choose to attend in-person, please see the in-person course requirements.

### IMPORTANT REMINDER

Please be sure to register for each course at least two days prior to the start of the class sessions so that you can receive the email link that grants you access. You may register for a course that has already started at any time, but you must pay the full price. Course fees are NOT prorated or transferable.



# FALL COURSE REGISTRATION WILL BEGIN ON WEDNESDAY, SEPTEMBER 4

## IMPORTANT REMINDER

Please make sure you are up to date on your OLLI@SCU membership for the current academic year 2024-25. If you have not renewed your OLLI membership, please do so **here**.

We are splitting the membership alphabet equally into two registration sessions:

- Session 1 and Session 2 will take place on the same day but at different times.
- Seat capacity in each class will be divided equally to ensure both sessions have equal access.

## STEP-BY-STEP INSTRUCTIONS

### TUESDAY, SEPTEMBER 3 | REGISTRATION LINK IS EMAILED

All OLLI members, whether in Session 1 or Session 2, will receive the registration link directly by email on Tuesday, September 3 by 1 p.m. The time slots for the two registration sessions will be specified so keep this email in your inbox so you can access it when it is your time to register. Please have all your classes selected before you start to register on September 3.

### AFTER 2 P.M. TUESDAY, SEPTEMBER 3

If you did not receive a registration link, we encourage you to email the OLLI office at [olli@scu.edu](mailto:olli@scu.edu) - do not call - so we can send you your designated registration link.

### WEDNESDAY, SEPTEMBER 4 | REGISTRATION DAY

- Session 1: Members with last names that start with A-K will register from 10:00 a.m. - 11:00 a.m. with the designated registration link for this time slot. (This link closes at 11 a.m.)
- **The registration system will close for 30 minutes from 11:00 a.m. - 11:30 a.m.**
- Session 2: Members with last names that start with L-Z will register from 11:30 a.m. - 12:30 p.m. with the designated registration link for this time slot. (This link closes at 12:30 p.m.)

## IMPORTANT REMINDER

If you miss your time slot or decide to add another class, course registrations will re-open to all members after 1:00 p.m. on Wednesday, September 4, and remain open until the end of the quarter. You can register on the home page, [scu.edu/osher](https://scu.edu/osher) and select “register for courses.”

## REGISTRATION INFORMATION

### Who is Eligible to Register?

Every current OLLI member is eligible to register for any of the offered classes, events and trips. The Osher Office no longer processes phone orders. You may register for yourself only; membership is not transferable. We cannot hold seats. If you wish to attend an OLLI program with a friend, encourage them to register early. Due to space limitations, we regret that it is not possible for non-OLLI members to attend OLLI classes or events, even as guests.

### Registration Tips

Register as soon as possible. This will increase your selection.

Many of you have experienced delays and duplicate registrations when using the Safari browser. In our experience, the most efficient browser is Google Chrome so we ask that you consider using Google Chrome during the registration process.

If you are an AOL email account holder and you're not receiving emails from our OLLI office, please consider getting a Gmail account. You have the option to forward email from Gmail to AOL.

Please note: Classes that are under-enrolled are subject to cancellation.

### Registration

Registration can be completed online by going to [scu.edu/osher](http://scu.edu/osher) and selecting class registration.

### Payment Types Accepted by OLLI

Our online system, Clara, is secure and accepts the following credit cards: Visa, Mastercard, Discover, and American Express. Please do not register with a debit card that requires a pin code. You will not be able to complete your registration.

### Registration Confirmation

When you enroll online you will receive an electronic confirmation when your registration has been processed. Print this for your records.

### Course Selection

Registration online with a credit card (on our secure site) is the best and fastest way to ensure that you will secure your priority course selections.

### Cancellation and Refunds

OLLI@SCU is no longer able to request a refund for a class or event you cannot attend. The refund exceptions are: the classes that are canceled by the OLLI office, hospitalization, death or a significant life event which prevents the stricken individual from participating.

### Scholarship Program

The Osher Lifelong Learning Institute at SCU believes that members who cannot afford course fees should have the opportunity to take classes and participate in the rich intellectual life of OLLI. There is a scholarship program available for qualified members. All scholarship applicants must have a current membership and complete the OLLI scholarship application. The Osher Office receives all applications and notifies applicants. The form is available at [www.scu.edu/osher/development/scholarships](http://www.scu.edu/osher/development/scholarships) or by calling the Osher Office.

Please do not apply more than once a year for a scholarship.

## MEMBERSHIP INFORMATION

### IF YOU HAVEN'T RENEWED YOUR MEMBERSHIP, DO SO TODAY!

Membership is open to all adults

Price is \$55.00

Non-transferable, non-refundable

From: **August 1, 2024 - July 31, 2025**

Note: By joining Osher in the Fall, you will receive the maximum value from your membership - catalogs, class and SIG eligibility, and social events. You must be a current member to register for courses and events. Membership is not prorated.

## How to view daily events and monthly events online.

Step 1. Visit our website, [scu.edu/osher](http://scu.edu/osher)

Step 2. Select “Current Schedule” to view daily schedule OR

Step 3. Select “Calendar” to view daily, weekly or monthly events at OLLI@SCU

The screenshot shows the Osher Lifelong Learning Institute website. At the top is a navigation bar with links: ABOUT SCU, ACADEMICS, ADMISSION, ATHLETICS, CAMPUS LIFE, GIVING, GLOBAL, NEWS & EVENTS. Below this is the header "Osher Lifelong Learning Institute" with a "Home" link. A "COVID-19 Update" section follows, mentioning face covering requirements. The main content area is divided into several sections: "Join OLLI@SCU" with bullet points for joining and registering for courses; "Fall Quarter Announcements" with dates for registration and classes; "Membership Registration" with an image of a group of people; "Class Registration" with an image of markers and a "Make a gift" button; "Current Schedule" with two course listings: "ONLINE ONLY: Venice: The City of Pleasure" and "ONLINE ONLY: Megadrought: Surviving the New Normal in California"; "Special Interest Groups" with a red button; and "Calendar" with an image of a calendar and a pencil. Red arrows point from the "Join OLLI@SCU" and "Class Registration" sections to the "About" and "Calendar" links in the right-hand navigation menu.

## Membership Benefits

The opportunity to select from more than a vast number of quality courses offered each year, covering a wide range of subjects, taught by extraordinary instructors, many of them from Santa Clara University

An OLLI Distinguished Speaker Series with timely topics that address interests of life-long learners

Invitations to free campus programs including de Saisset Museum, Music at Noon, and Ethics at Noon; discounted admission to campus events: Center for Performing Arts.

“Members Only” Special Events

Special Interest Groups (SIGs)

Quarterly Course Catalogs

Hot Topics

Spotlight on SCU

Distinguished Speaker Series

Exciting volunteer opportunities

Monthly E-Bulletin

The opportunity to be part of a community of those who enjoy learning, discussion, social interaction, cultural enrichment and personal growth

## SPECIAL INTEREST GROUPS (SIGS)

A SIG is a group of OLLI members who gather outside of class time to provide learning or recreational opportunity in areas of personal interest.

SIGs are a very popular benefit of membership, as they're a great way to make new friends and socialize with members with similar interests. There is no additional fee to join any or all of the SIGs, and attendance is always optional. Some groups meet on a regular basis at the same time and place. Other groups get together for specific events.

Special Interest Groups are defined and put together by members, for members, and are not sponsored by the university. The SIG facilitators are responsible for updated email lists and are asked to keep them current; they are also asked when sending out communication to their members to use the bbc (Blind Copy) option. Membership is required to be a part of a SIG. No exceptions.

The OLLI office will be happy to list the SIGs and facilitator contact information in the OLLI E-Bulletin, and help schedule rooms and ZOOM meetings, if necessary.

See pages 21-22 for more information.





**Guadalupe Hall (across the street from the main campus)**

- OLLI Offices
- Classroom 150 and 151

**Vari Hall | Building 804**

- Wiegand Room 102

**Sobrato Residence Hall | Building 605**

- Rooms B and C

**Learning Commons and Library | Building 401**

- Library Viewing and Taping Room A

**Charney Hall | Building 803**

- Room 101
- Room 205

**Daly Science Center | Building 207**

- Room 206
- Room 207

**Mayer Theatre | Building 110**

- Fess Parker Studio Theatre

**Adobe Lodge | Building 108**

- Holiday Dinner
- Dining

**Benson Memorial Center | Building 301**

- Williman Room
- Benson Parlors
- Dining

**Locatelli Student Activity Center | Building 710**

- Kickoff Event

Even if you have a handicap, you must purchase a parking ticket

Please remember that University parking restrictions are fully enforced during the following hours: Monday-Friday 6 a.m. - 8 p.m.

No enforcement on Saturday, Sunday, or University holidays

**OLLI members and guests can park in any of 3 University-owned and operated parking structures:**

- Guadalupe Hall Parking Lot:** 455 El Camino Real, Santa Clara, CA 95053 | Parking pass \$6 day-permit or \$4 for 4 hours at the pay station.
- Main Parking Structure:** 500 El Camino Real, Santa Clara, CA 95053 | OLLI daily parking pass of \$3 purchase at the Main Gate kiosk. You may park in the Main Parking Structure 2nd and 3rd floor in slots labeled for E permits.
- North Parking Structure:** 1063 Alviso Street, Santa Clara, CA 95053 | Parking pass is \$6 at the pay station.



# IMPORTANT: PARKING INFORMATION

## Parking at Santa Clara University

For complete, up-to-date information on campus regulations and the campus parking plan, visit the Campus Safety website at [university-operations.scu.edu/campus-safety](http://university-operations.scu.edu/campus-safety)

*Please Note: Regulations apply to all campus visitors; exceptions will not be made for Osher.*

To park on campus or on University-owned property, every vehicle must have a valid parking permit visibly displayed between the hours of 6am and 8pm, Monday through Friday. A permit is not required for Saturday, Sunday, and University holidays.

## Main Gate - Daily Permits

OLLI members can purchase parking permits directly from the Main Entrance Kiosk, Monday through Friday from 8 AM - 5 PM. The main gate is located at Palm Drive and El Camino Real. It is clearly marked overhead (white on green street sign) as "SCU Main Entrance". It is opposite the Santa Clara Transit Center/Caltrain Station.

Please plan accordingly to pick up a pass at the front gate before your class starts. If parking in the North Garage, daily parking permits may be purchased at machines located in the parking structure.

You must purchase a daily permit and pay \$6 for each visit (half price). Tell the person at the Main Gate Kiosk you are attending an OLLI course or event. Please remember to hang the permit from your rear view mirror, with the date and time visible through the windshield. **Even if you have a handicap placard, you must purchase a permit.**

If you are attending a complimentary event on campus (e.g., Music at Noon), you can request a two-hour guest permit free of charge at the Main Gate.

## Transportation Services

Quarterly Permits are available for purchase at the Transportation Services Office for \$25. Annual permits are available for \$100. The office is located on the ground floor of the Main Parking Structure. TSO accepts cash, personal checks, Visa or Mastercard for this purchase. For more information, please call (408) 551-7080.

## Parking Locations

Osher parking permits entitle you to park in any commuter student parking stall, which require an **E or F Permit**. You may park on campus in the following lots: 2nd and 3rd floors of the Main Parking Structure, North Garage, Leavey Lot, and Guadalupe Hall. See the campus map for further information at [scu.edu/map](http://scu.edu/map).

Display your permit properly so that it is visible from outside your vehicle. Failure to display a valid permit will result in a citation with a \$50 fine. Purchase of a parking permit does not guarantee the

availability of parking spaces in any particular lots or campus areas.

## Osher Office

### Physical Address:

455 El Camino Real  
Guadalupe Hall, Room 135  
Santa Clara, CA 95053-0207

### Mailing Address:

Santa Clara University  
Osher Lifelong Learning Institute  
500 El Camino Real  
Santa Clara, CA 95053-0207

The Osher Office does not sell parking permits. Parking tickets are the responsibility of the driver, and the Osher Office is unable to assist in their resolution. Please be sure to follow posted regulations on page 22 when parking on campus or near the University.

## More Options to Campus

- Ride your bike. Racks are available throughout campus; bring your own lock.
- VTA: (408) 321-2300 or [vta.org](http://vta.org)
- Caltrain: The Santa Clara station is opposite the University's Main Entrance. (800) 660-4287 or [caltrain.org](http://caltrain.org)
- Outreach Senior Transit: (408) 436-2865 or [outreach1.org](http://outreach1.org)



**NOTE:** You will need a parking permit for each class day if you park in the lots and garages. Exceptions are the weekends and holidays.

## Office of Accessible Education

The disabled experience is diverse, encompassing people from all backgrounds and identities. A disability is a physical, medical, intellectual, psychological, or other type of impairment that significantly impacts or substantially limits one or more major life activities. Disabilities can be visible or invisible, something a person is born with or has acquired at any point in life. Disability includes, but is not limited to: learning disability, attention deficit disorder, autism spectrum disorder, blind or low vision, deaf or hard of hearing, a mobility or chronic health condition, and/or a psychological disorder.

### How to Register?

Complete the OLLI Office of Accessible Education's online application at: <https://www.scu.edu/oae/register-with-oae/>  
After the OAE receives an online application, an OAE Advisor will connect with an OLLI representative to communicate appropriate accommodations.

### Contact Us

Office of Accessible Education  
Benson Memorial Center 1  
(408) 554-4109  
oae@scu.edu  
<https://www.scu.edu/oae/>

## Word of Mouth

Think about the power of a personal recommendation. There isn't much that's more persuasive. So spread the word about Osher to friends and acquaintances and let them know how to connect to SCU's intellectual and cultural life. We count on our members to spread the word about OLLI.

You'll be helping to ensure OLLI's future.

For OLLI@SCU flyers to distribute, contact the Osher Office at (408) 554-2382 or at [olli@scu.edu](mailto:olli@scu.edu).

Please forward this catalog to family and friends who you think would be interested in the benefits of the OLLI program.

**If you're excited about these OLLI courses in the catalog, please share an OLLI card with your family and friends!**



### The Osher LifeLong Learning Institute



at  
Santa Clara  
University



website: [www.scu.edu/osher](http://www.scu.edu/osher)  
email: [OLLI@scu.edu](mailto:OLLI@scu.edu)  
Phone: 408.554.2382

Lifetime Learning for those who Love to Learn



### The Osher LifeLong Learning Institute



at  
Santa Clara  
University



website: [www.scu.edu/osher](http://www.scu.edu/osher)  
email: [OLLI@scu.edu](mailto:OLLI@scu.edu)  
Phone: 408.554.2382

Lifetime Learning for those who Love to Learn



### The Osher LifeLong Learning Institute



at  
Santa Clara  
University



website: [www.scu.edu/osher](http://www.scu.edu/osher)  
email: [OLLI@scu.edu](mailto:OLLI@scu.edu)  
Phone: 408.554.2382

Lifetime Learning for those who Love to Learn